

JONSN
MICRO GEAR PUMPS

No pulse conveying
High precision
High repeatability
Long lifespan

JONSN
MICRO GEAR PUMPS



Attentively focus on making each precision gear pump!

IDIP

**PRECISION
GEAR METERING PUMP**

■ SHANGHAI JONSN FLUID EQUIPMENT CO.,LTD

Address: Room 403, Building 3, No.59 Jinma Rd,
Economic & Development District, Songjiang
Area, Shanghai, China
Tel: 021-34720020 Fax: 021-67689517
Website: www.jonsn.cn Email: lijun@jonsn.cn

■ JONSN (GANZHOU) FLUID TECHNOLOGY CO., LTD

Address: Workshop 2, No. 6 Jingsan Rd,
Economic & Development District,
Ganzhou City, Jiangxi Province, China
Website: www.jonsn.com
Email: sales@jonsn.com (International department)

ENTERPRISE PROFILE

Shanghai JONSN Fluid Equipment Co.,Ltd. was established in 2010. It is a company with world-renowned imported pumps as its technical background. It has two business divisions, namely the JONSN brand pump manufacturing division and the imported pump trading division. An excellent R&D and innovation team provides customers with fluid transportation solutions that integrate design, production and sales.

In 2019, Shanghai JONSN Fluid Equipment Co., Ltd. made a new plan to establish a new factory in the central region. In 2020, the new factory was officially settled in Ganzhou National Economic and Technological Development Zone. JONSN bucked the trend and formed a new technology development team, cooperated with foreign companies, adopted foreign advanced manufacturing technology and lean management, selected high-quality raw materials, designed and manufactured precision gear metering pumps with high cost performance, easy installation and maintenance.

TECHNOLOGY PUMPS



DEVELOPMENT PATH



2010

Shanghai Jonsn was established. The company's core management has dozens of years of experience of European and the American imported gear pumps, magnetic pumps, barrel pumps, diaphragm pump, and special pump for high temperature, high pressure and corrosive industry etc.

2011

Jonsn has established its own R&D center of precision gear pumps. Started ERP management system. Designed the whole series of Jonsn barrel pumps, passed test and obtained the CE certification.

2012

Shanghai Jonsn Fluid Equipment Co., Ltd. changed from a trade-oriented company to a production-oriented enterprise. In the same year, Jonsn barrel pump series products were put into production one by one and sold to foreign markets. Jonsn precision micro gear pump design was completed at the same year.

2013

Jonsn precision micro gear pump prototype has passed the verification. Its design life and process parameters far exceed similar products in Europe and America. The company fully focused on the R&D, design and production of high-precision gear pumps.

2014

Jonsn micro gear pumps achieved mass production. And we started the design of DX high viscosity gear pumps.

2015

The JONSN trademark has been registered successfully, and 2 invention patents and 7 utility model patents have been applied for. JONSN precision micro gear pump finalized mass production. Successfully applied and exported to European and American markets. Successfully signed Sinopec, CNOOC, Tianjin Jereh and many other enterprises.

2016

DX series high-viscosity gear pump finalized production. In the same year, the company's gear pump performance achieved an annual output value of more than 30 million.

2017

Import product code tracking and traceability system. Started 6S on-site management system.

2018

The strategic positioning of the enterprise has been upgraded to "reliable high-quality pump supplier". Focus on quality control, achieve 100% factory test pass and make trustworthy good products.

2019

JONSN precision gear pump successfully obtained CE certification and applied to SCR exhaust gas treatment system in shipbuilding industry. Nippon Kaiji Kyokai staff passed the site inspection test, Jonsn obtained the "Class NK" license from Nippon Kaiji Kyokai. Become a fluid control system solution provider for the new energy lithium battery industry.

2020

Launch a new LOGO brand identity and brand concept. Focus on R&D and production of high-precision gear pumps. The new factory joint with the British Brontz Group officially settled in Ganzhou. The company started the research and development of DP series high viscosity gear metering pump.

2021 to present

Started the TUV Rheinland ISO9001 quality management system certification work. The first sample pump of DP series high-viscosity gear metering pump enters the test verification stage.

COOPERATIVE PARTNER



MR Series
MR series precision magnetic gear pump

DP Series
DP series medium and high viscosity precision gear metering pump

DX Series
DX series high temperature and high viscosity gear metering pump

Acting
Acting as an agent for BRONTZ internal gear pumps











Look forward to working with you
.....

HONORARY PATENT


We focus on the technical development of precision gear pumps. We are engaged in precisionproduction. Skilled technology and craftsmanship are the main characteristics of our work. The birthof every Jonsn precision gear pump embodies the beauty of craftsmen. Their strict requirements forproducts and outstanding performance have contributed to the development of the company.Jonsn company has successively obtained 15 utility model patents. 2 invention patents. meanwhilewe have obtained the German TUV Rheinland ISO9001 quality management system certification,CE certification ABS certification, 、 BV certification, Nippon Kai Kyokai certification, etc.




TÜV Rheinland ISO9001
quality management certification



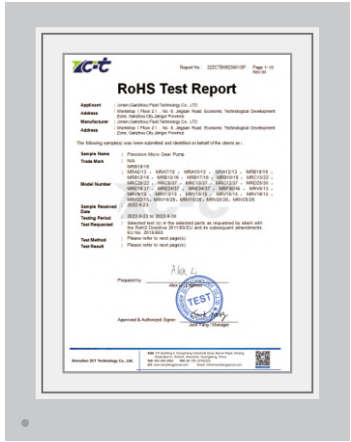
BV certification




ABS certification



2 invention patents
15 utility model patents



RoHS Test Report



CE certification

DP

SERIES

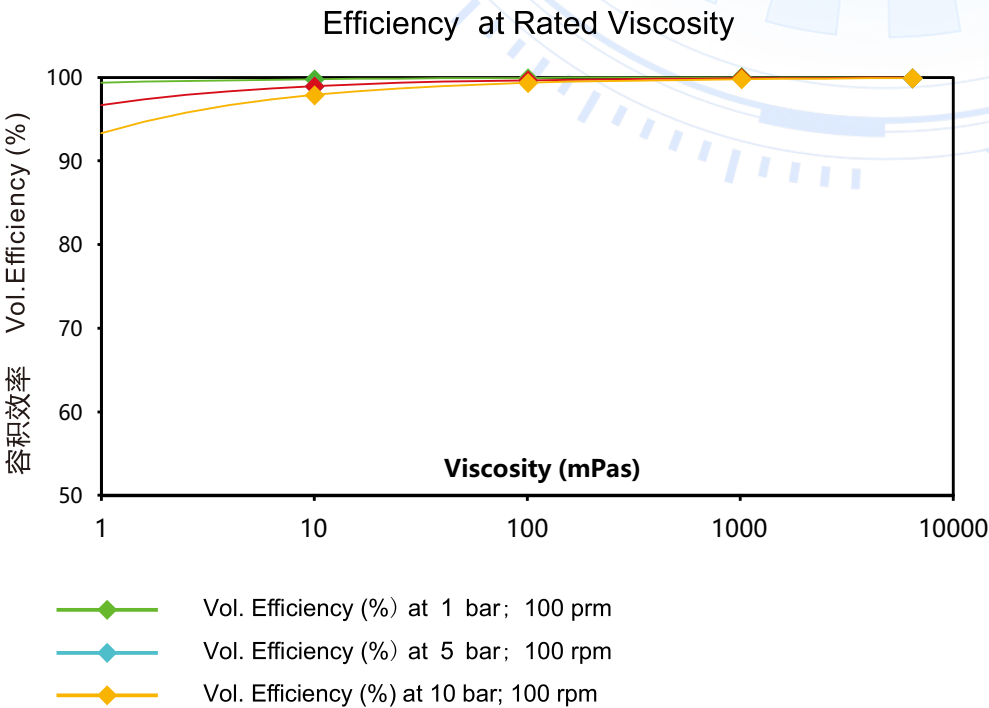
GEAR METERING PUMP

One of the DP series products is a gear metering pump designed based on the transportation of medium and high viscosity materials.

It mainly adopts the design of a multi-tooth and high-strength precision gear set, thus having the "low pulse and high linear" characteristics, and precise matching with the inner cavity of the pump to maintain high volumetric efficiency to ensure the quantitative and repeat accuracy of the fluid per rotation.



DP GEAR PUMP VOLUMETRIC EFFICIENCY CURVE



CONFIGURATION CODE

| DP | R | 02 | B | B | B | L | 0 | M1 | 0 | 0 | 0 |
|--|------------------|----|---|---|---|---|--|------------------------|---|---|---|
| Series No. | | | | | | | Static seal | | | | |
| | | | | | | | 0 | No ring/flat seal | | | |
| | | | | | | | F | PTFE | | | |
| | | | | | | | M | FKM | | | |
| | | | | | | | E | EPDM | | | |
| | | | | | | | P | FFKM | | | |
| | | | | | | | L | Neoprene | | | |
| Inlet & outlet thread | | | | | | | Shaft seal type | | | | |
| R | Rc thread | | | | | | M1,M2 | Single mechanical seal | | | |
| T | SAE flange | | | | | | G | Packing seal | | | |
| G | G thread | | | | | | N | Magnet drive | | | |
| N | NPT thread | | | | | | <small>M1 single mechanical seal (316L + fluororubber / silicon carbide / graphite / 316) M2 single mechanical seal (316L + EPDM / silicon carbide / graphite / 316)</small> | | | | |
| Displacement | | | | | | | | | | | |
| 02/06/12/24/30/36 | | | | | | | 02= 0.2cc/r | | | | |
| 50/100/200/400/700/1000 | | | | | | | | | | | |
| Pump material | | | | | | | | | | | |
| B | 440B | | | | | | | | | | |
| C | Alloy tool steel | | | | | | | | | | |
| S | 316L | | | | | | | | | | |
| The material of the gear shaft | | | | | | | Magnet material | | | | |
| B | 440B | | | | | | 0 | No magnet | | | |
| C | Alloy tool steel | | | | | | N | NdFeB magnet | | | |
| S | 316L | | | | | | M | Sintered NdFeB | | | |
| | | | | | | | Y | Ferrite | | | |
| Sliding bearing | | | | | | | Mounting plate installation method | | | | |
| B | 440B | | | | | | 0 | Without | | | |
| Y | Alloy | | | | | | 1 | With | | | |
| Structure (Inlet and outlet direction) | | | | | | | Special treating | | | | |
| L | 180° (standard) | | | | | | 0 | No surface coating | | | |
| B | 90° & other | | | | | | 1 | DLC coating | | | |
| | | | | | | | 2 | Electroplating | | | |
| | | | | | | | 9 | OEM | | | |

Pump head parameters:

| | |
|----------------------|--|
| Displacement(cc/rev) | 0.2/0.6/1.2/2.4/3/3.6/5/10/20/30 /40/70/100 |
| Viscosity range | 100~500000 m.Pas |
| Speed range | 0-100 rpm |
| Flow rate range | Displacement × motor speed (rpm) |
| Outlet pressure | 70bar(1000 psi) (depends on viscosity) |
| Temperature range | -18℃ to 150℃ Other temperatures can be customized, optional electric heating and thermocouple system available |
| Seals | Mechanical seals, lip seals, packing seals, magnetic coupling seals |

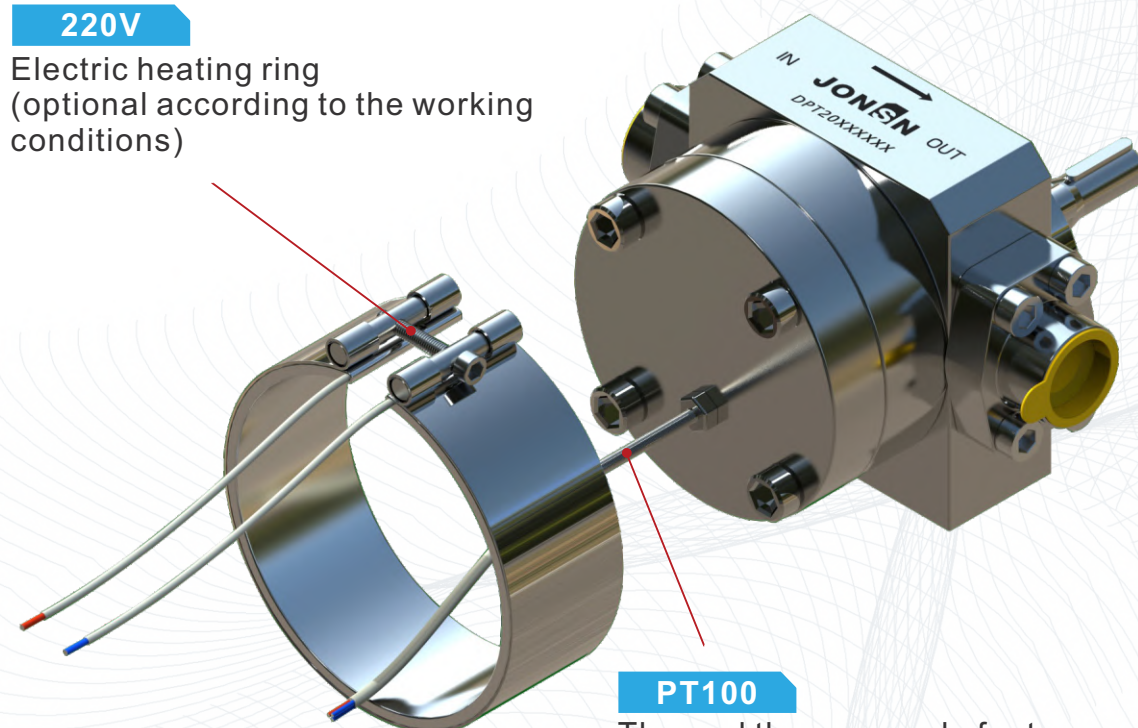
IDP SERIES

GEAR METERING PUMP

The pump body and gears have undergone high-strength heat treatment and grinding processes, and at the same time, DLC coating can be carried out according to different applications to provide additional corrosion resistance and wear resistance. The unique design enables the flow transportation to have lasting stability, eliminates unnecessary valves and buffer components, and made the system simplified, cost reduced, and performance improved.

220V

Electric heating ring
(optional according to the working conditions)



PT100

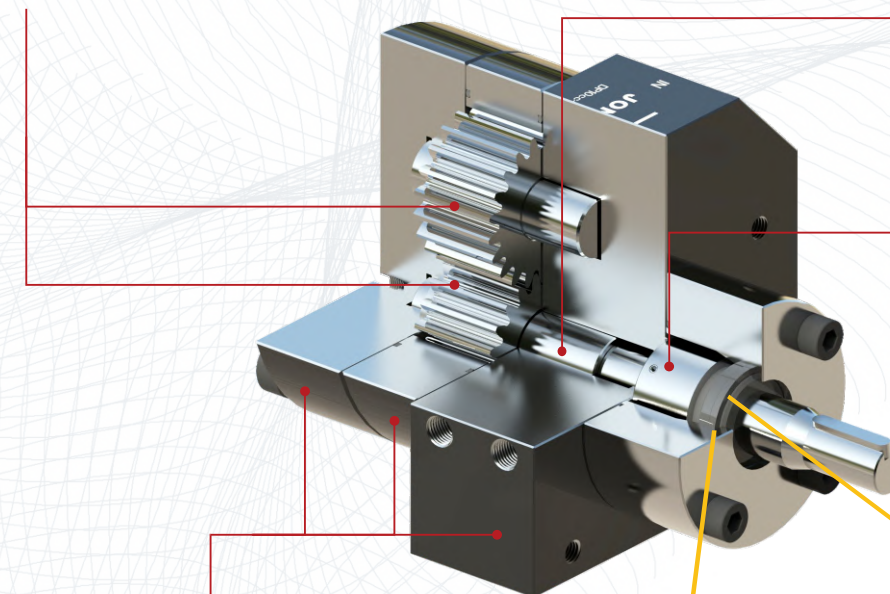
Thermal thermocouple for temperature measurement
(optional according to the working conditions)

Precision gear

- high strength tool steel
- Stainless steel 440B + heat treatment (as default)
- 440B+ wear-resistant DLC coating (optional)

Drive shaft

- high strength tool steel
- Stainless steel 440B + heat treatment (as default)
- 440B+ wear-resistant DLC coating (optional)

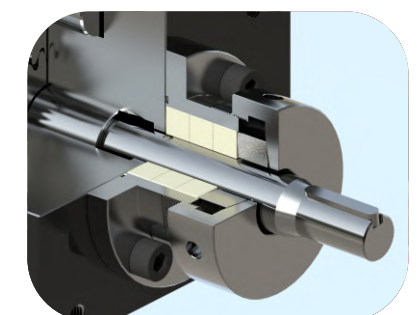


Shaft seal

- Packing seal
- Single mechanical seal
- Magnetic seal

Pump cover, Gear cavity plate, Pump casing

- high strength tool steel
- Stainless steel 440B + heat treatment (as default)
- 440B+ wear-resistant DLC coating (optional)



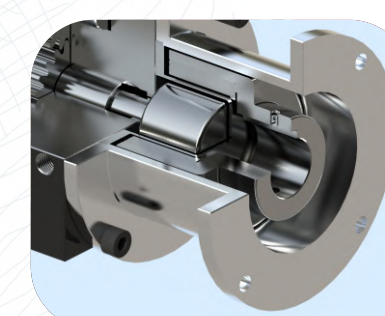
Packed seal



DLC 3500hv



Ta-c 4000hv

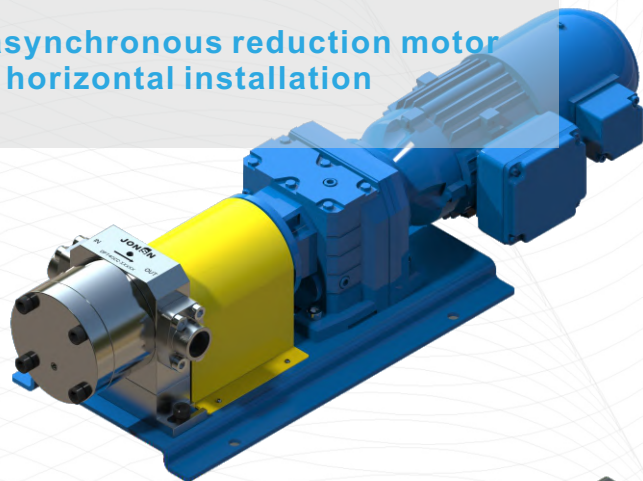


Magnetic seal

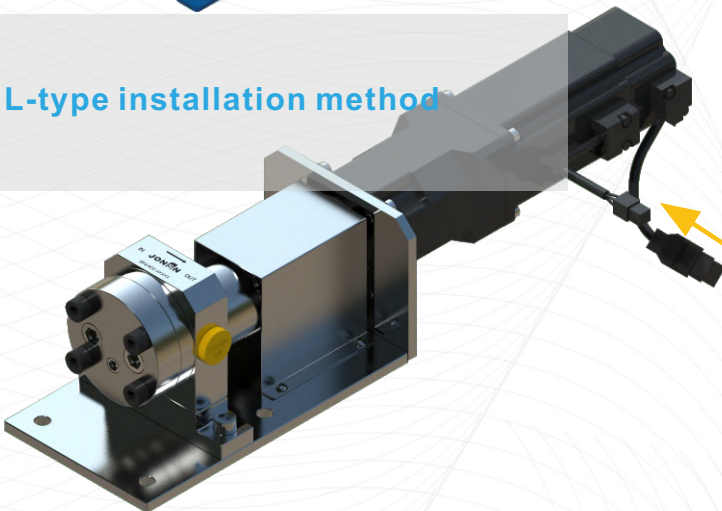
DP SERIES

GEAR METERING PUMP

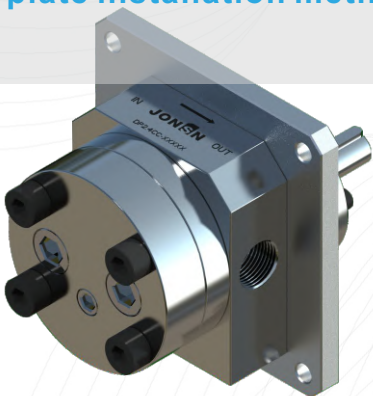
AC asynchronous reduction motor
with horizontal installation



L-type installation method



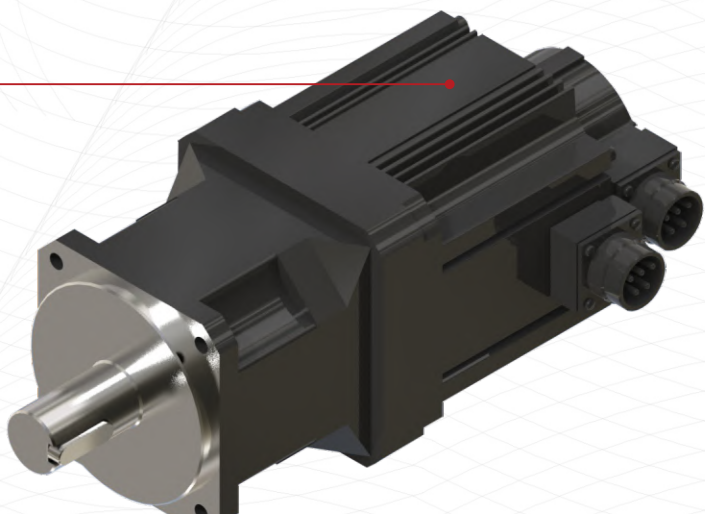
Mounting plate installation method



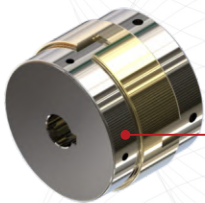
Coupling



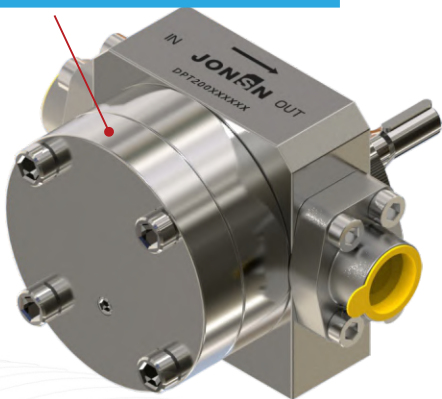
Servo reduction motor



High-precision heavy-duty
stainless steel coupling



DP SERIES PRECISION
GEAR METERING PUMP

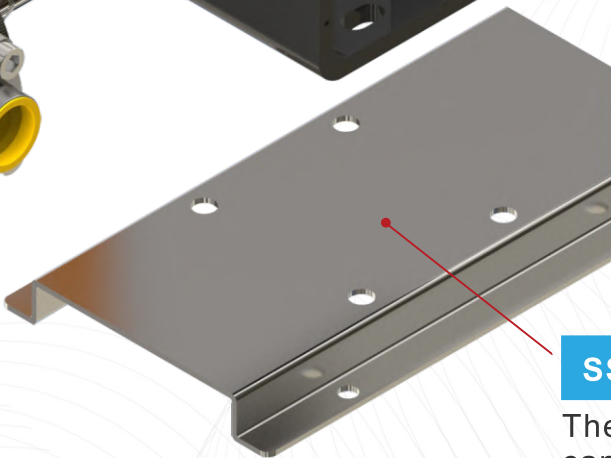


Protecting cover



SS base plate

The base plate is excluded by default and
can be optionally installed if necessary.



DP SERIES *Application*

THE DP SERIES OF PRECISION GEAR METERING PUMPS HAVE STABLE AND ACCURATE FLOW, SMALL SIZE, AND ARE WIDELY USED IN THE PRECISION CONVEYING, ADDITION, DISPENSING, SAMPLING, COATING, SPRAYING, METERING AND OTHER PROCESS CONTROL SYSTEMS OF MEDIUM AND HIGH VISCOSITY LIQUIDS.

广泛应用于:

Applications: Widely used in medium and high viscosity liquid precision conveying, adding, dispensing, sampling, coating, spraying, metering and other process control system. Polyimide film, silica gel, acrylic gel, polyol, silicone, adhesive, additive, asphalt, sugar solution, catalyst, chemical agent, cosmetic dye/fill, detergent, emulsion, epoxy resin, chemical fiber, foam, filler, hot-melt adhesive, ink, isocyanate, kerosene, mineral oil, monobase, oil paint, plastic, polyurethane, plasticizer, pigment, resin, silicon copper, surface activator, antifoam, tackifier, spraying tar, urethane, varnish, viscose, paraffin, polymer, filling, etc

PREPARATION OF
SPECIAL NEW
MATERIALS

SYNTHETIC RUBBER
PRODUCTS

HIGH VISCOSITY GLUE
LIQUID
TRANSPORTATION

AUTOMATED GLUING

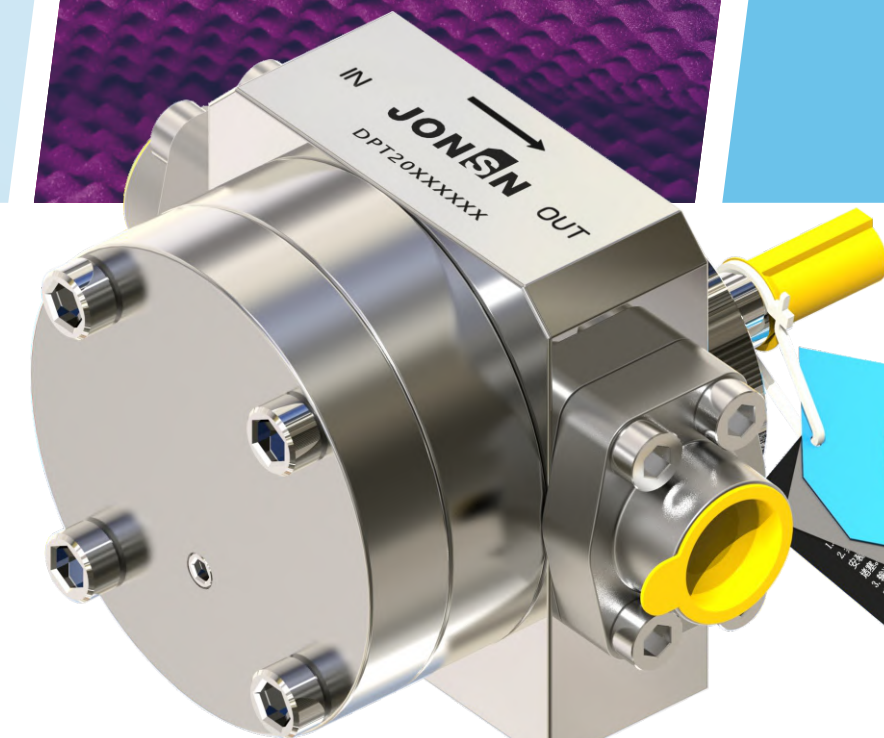
PRECISION COATING
MACHINE

POLYMER SYNTHESIS

ROBOT PAINTING

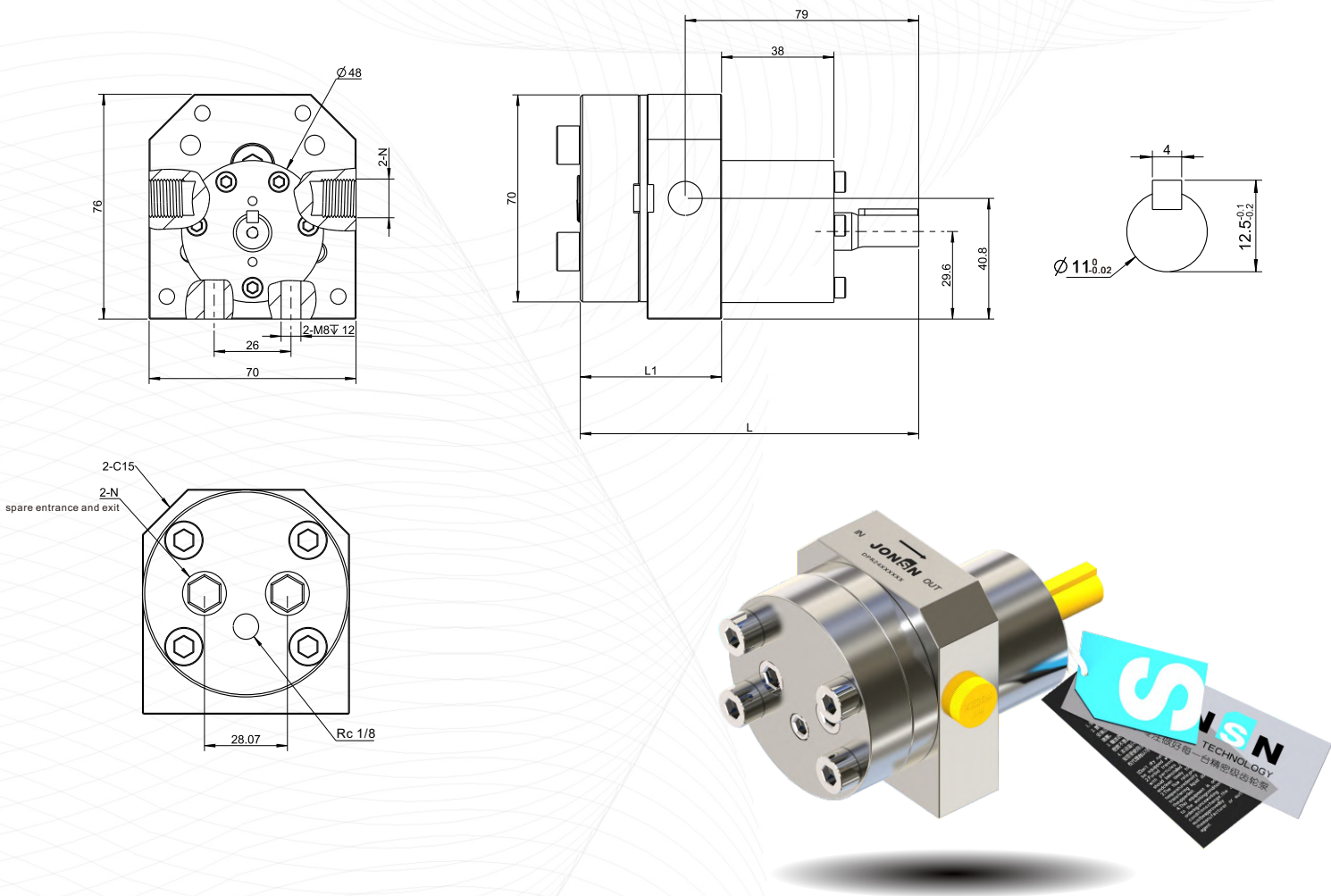
POLYIMIDE FILM

POLYURETHANE
FOAMING



DP

PRECISION GEAR METERING PUMP
0.2cc

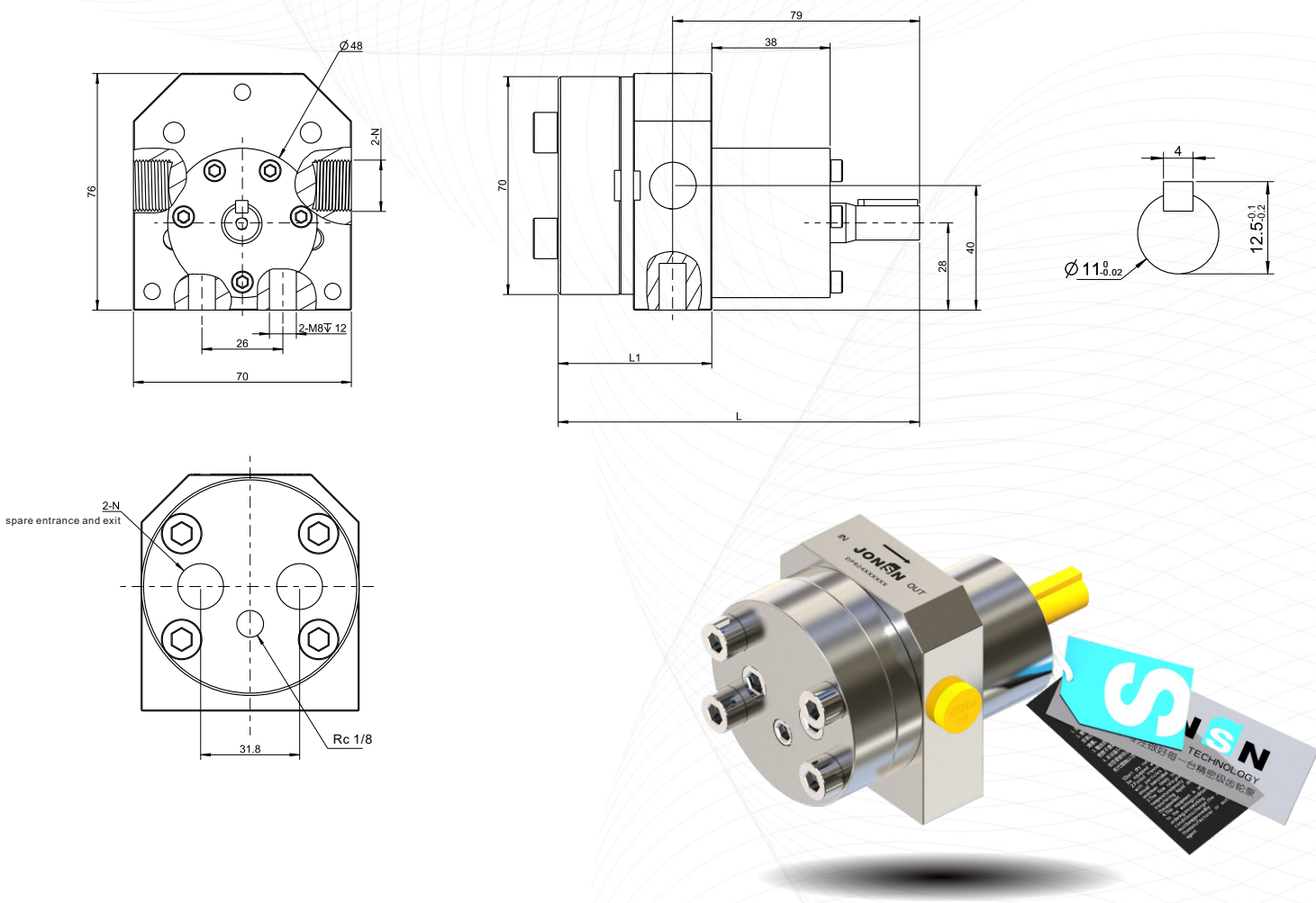


Note: We can provide you with detailed selection data solutions/dimensional drawing /STEP drawing

| Displacement cc/rev | L1 | L | N |
|---------------------|------|-------|-------|
| 0.2 | 47.8 | 114.5 | Rc1/4 |

DP

PRECISION GEAR METERING PUMP
0.6-3.6cc

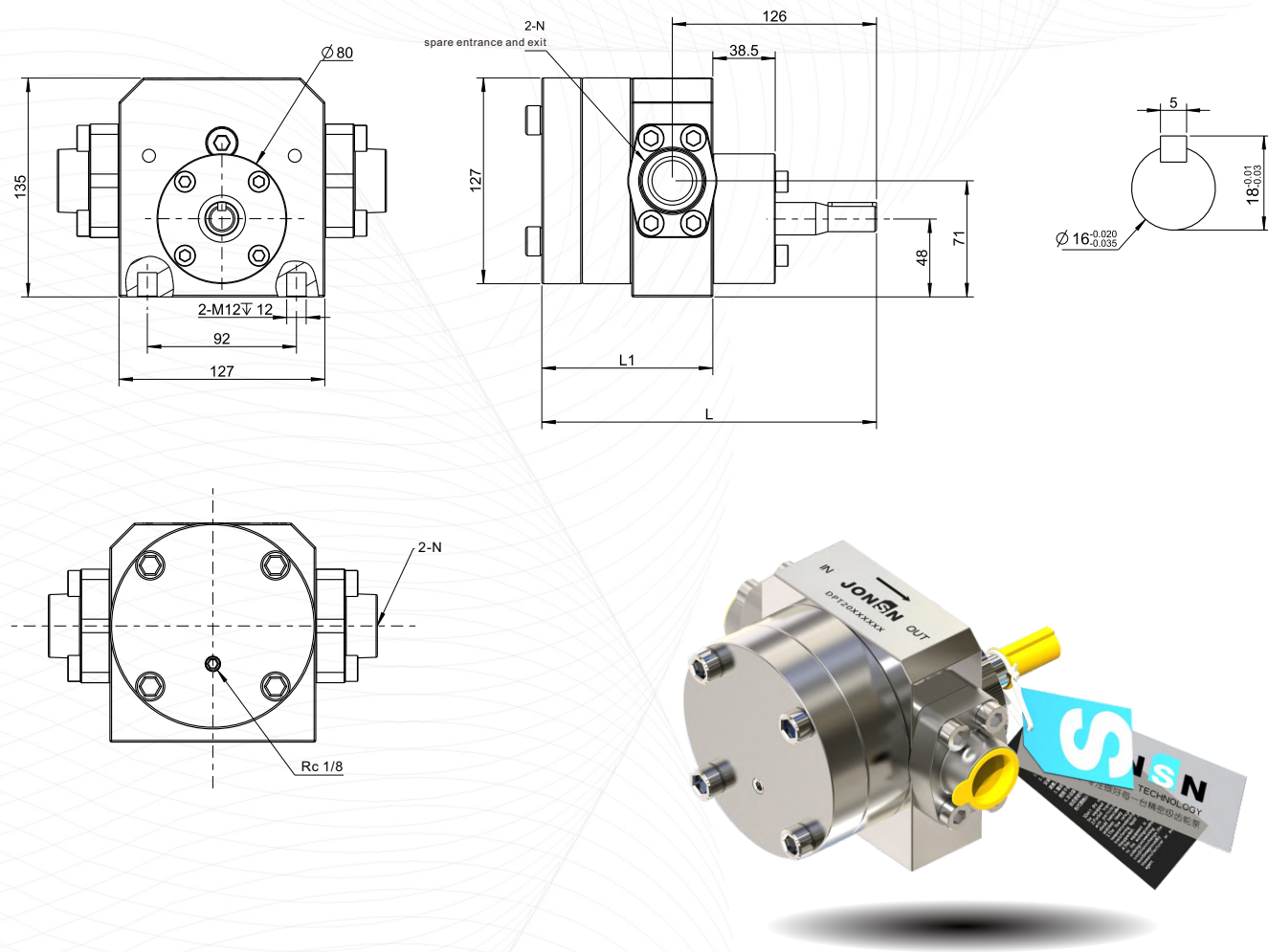


Note: We can provide you with detailed selection data solutions/dimensional drawing /STEP drawing

| Displacement cc/rev | L1 | L | N |
|---------------------|------|-------|-------|
| 0.6 | 49.3 | 116.0 | Rc3/8 |
| 1.2 | 53.3 | 120.1 | Rc3/8 |
| 2.4 | 61.4 | 128.2 | Rc3/8 |
| 3 | 62.5 | 132.2 | Rc3/8 |
| 3.6 | 69.5 | 136.3 | Rc3/8 |

DP

PRECISION GEAR METERING PUMP
5.0-40cc

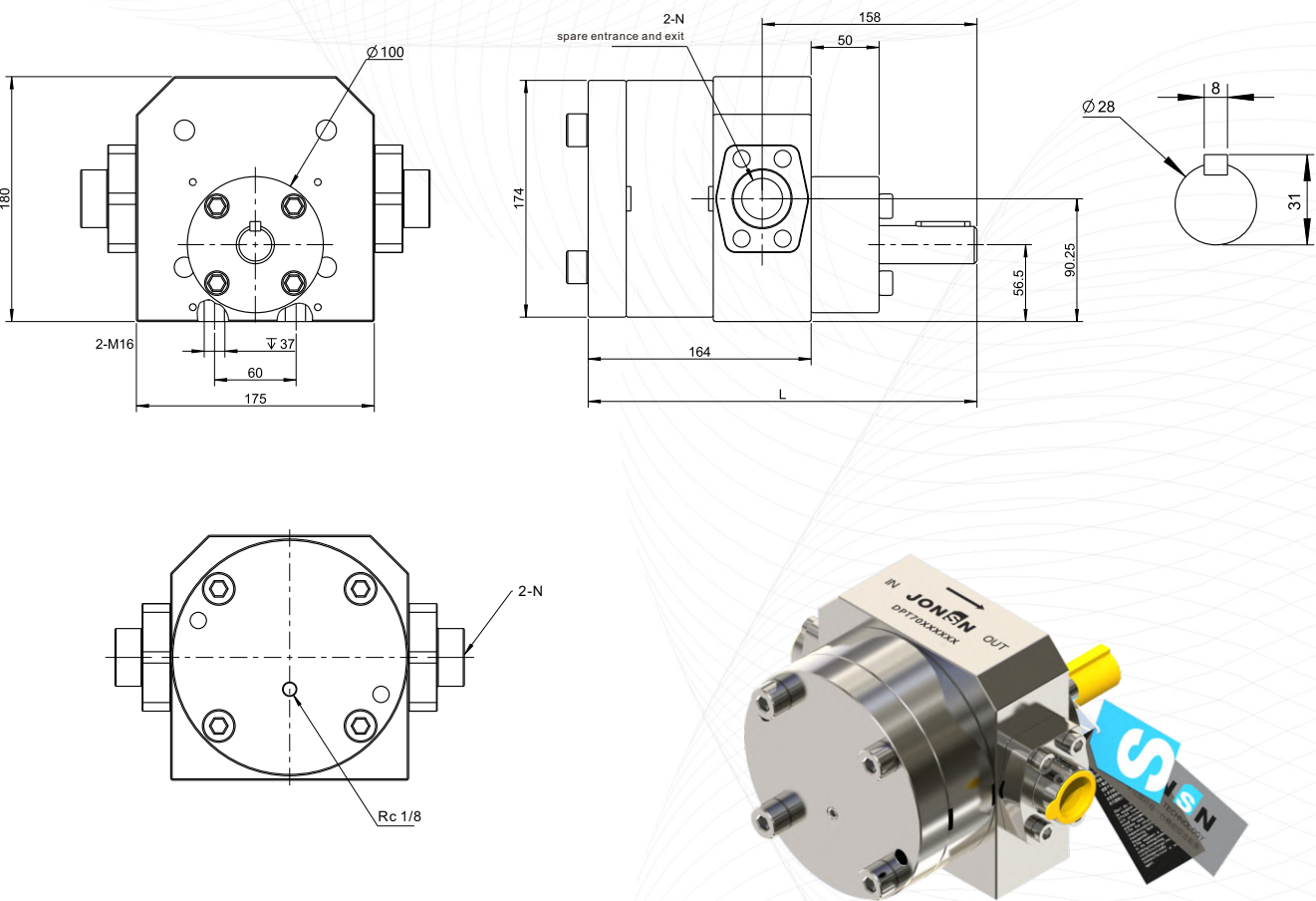


Note: We can provide you with detailed selection data solutions/dimensional drawing /STEP drawing

| Displacement cc/rev | L1 | L | N |
|---------------------|-------|-------|-------|
| 5 | 82.6 | 183.6 | SAE1" |
| 10 | 90.2 | 191.2 | SAE1" |
| 20 | 105.5 | 206.5 | SAE1" |
| 30 | 120.7 | 221.7 | SAE1" |
| 40 | 136 | 237 | SAE1" |

DP

PRECISION GEAR METERING PUMP
70-100cc



Note: We can provide you with detailed selection data solutions/dimensional drawing /STEP drawing

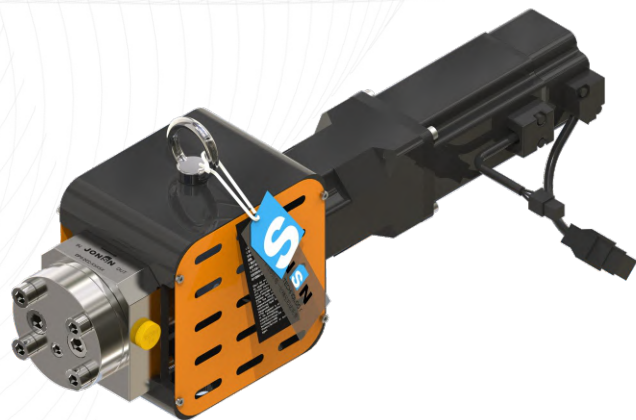
| Displacement cc/rev | L1 | L | N |
|---------------------|-----|-----|-----------|
| 70 | 145 | 267 | SAE1 1/4" |
| 100 | 164 | 286 | SAE1 1/4" |

DP SERIES

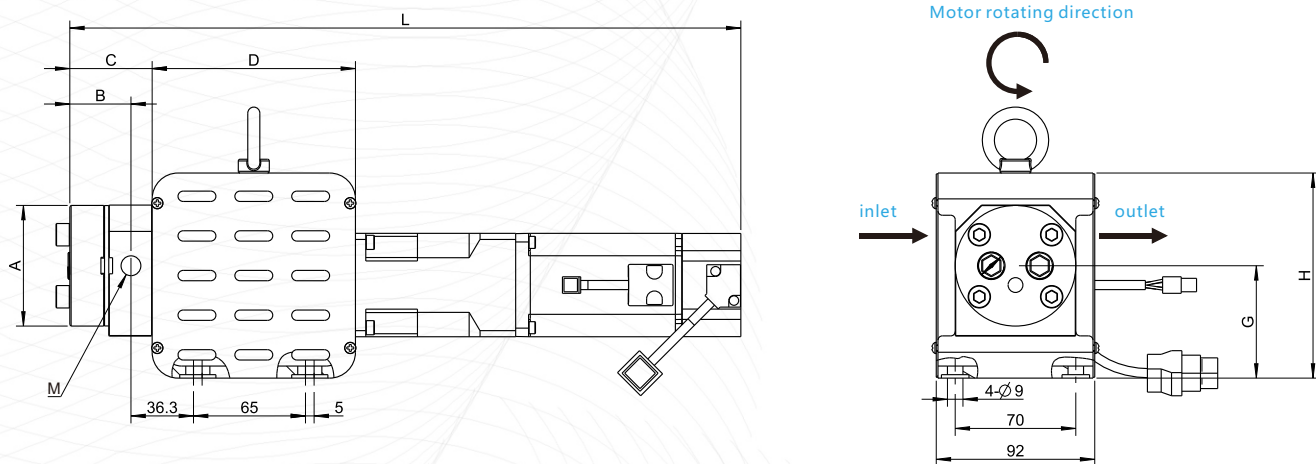
Motor configuration

DP 0.2-3.6 cc + Servo motor (as default)

Servo Motor
220V/110V
60 Frame



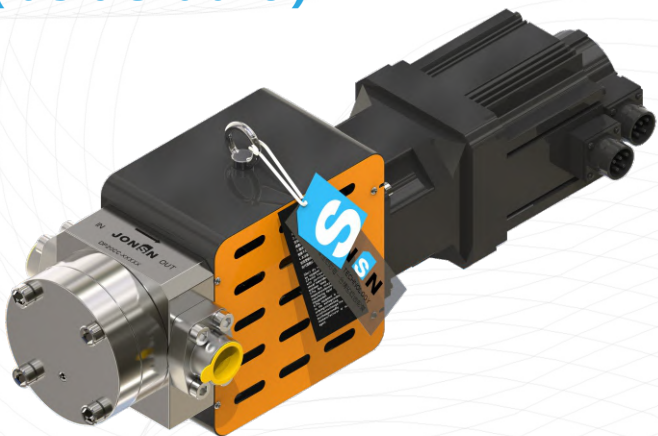
Standard: Delta
Optional: Siemens, Panasonic, Mitsubishi, Yaskawa
Others motor can be offered by client, Jonsn will help to install.



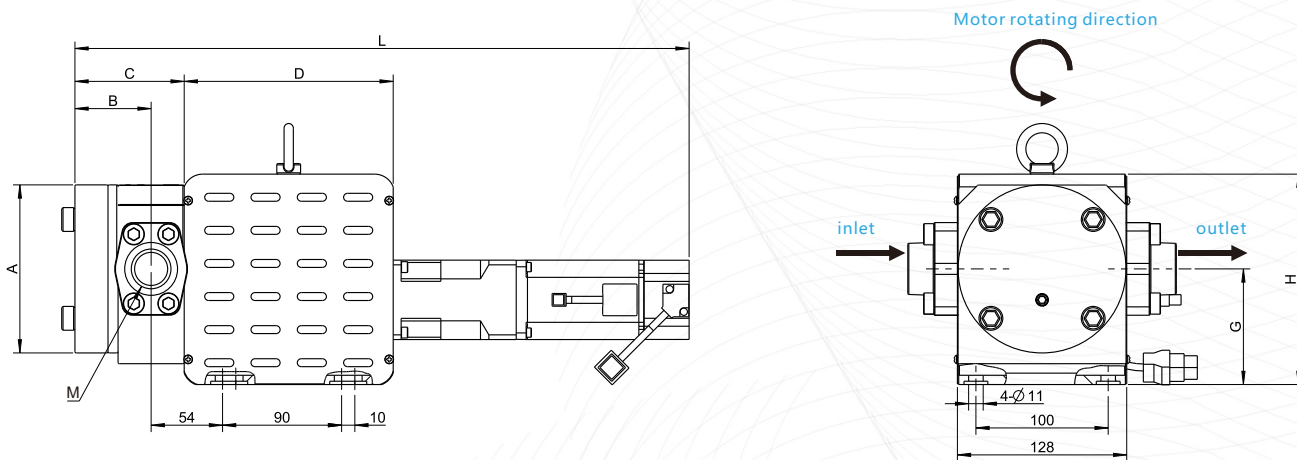
| Pumps order NO. | M | A | B | C | D | G | H | L |
|-----------------|-------|----|------|------|-----|------|-----|-------|
| 0.2cc & psf60 | Rc1/4 | 70 | 36.5 | 47.8 | 118 | 65.2 | 119 | 389.5 |
| 0.6cc & psf60 | Rc3/8 | 70 | 36.8 | 48.3 | 118 | 66 | 119 | 391.0 |
| 1.2cc & psf60 | Rc3/8 | 70 | 40.9 | 53.4 | 118 | 66 | 119 | 395.1 |
| 2.4cc & psf60 | Rc3/8 | 70 | 49.0 | 61.5 | 118 | 66 | 119 | 403.2 |
| 3.0cc & psf60 | Rc3/8 | 70 | 53.0 | 65.5 | 118 | 66 | 119 | 407.2 |
| 3.6cc & psf60 | Rc3/8 | 70 | 57.1 | 69.6 | 118 | 66 | 119 | 411.3 |

DP 5-40cc + Servo motor (as default)

Servo Motor
220V/110V
60/90 Frame



Standard: Delta
Optional: Siemens, Panasonic, Mitsubishi, Yaskawa
Others motor can be offered by client, Jonsn will help to install.



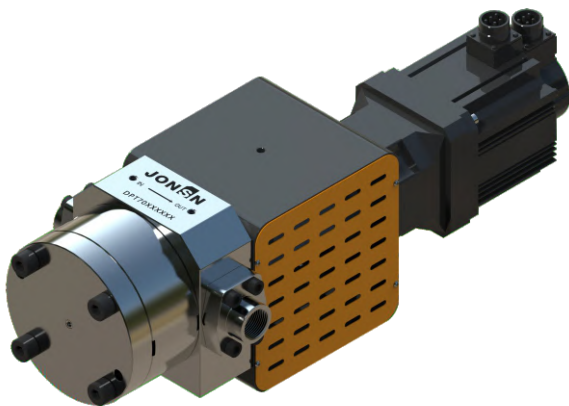
| Pumps order NO. | M | A | B | C | D | G | H | L |
|-----------------|-------|-----|------|-------|-----|------|-----|-------|
| 5cc & psf60 | SAE1" | 127 | 57.6 | 82.6 | 158 | 87.4 | 159 | 464.3 |
| 10cc & psf60 | SAE1" | 127 | 65.3 | 90.3 | 158 | 87.4 | 159 | 472 |
| 20cc & psf60 | SAE1" | 127 | 80.5 | 105.5 | 158 | 87.4 | 159 | 487 |
| 20cc & psf90 | SAE1" | 127 | 80.5 | 105.5 | 158 | 87.4 | 159 | 543 |
| 30cc & psf90 | SAE1" | 127 | 95.8 | 120.8 | 158 | 87.4 | 159 | 558 |
| 40cc & psf90 | SAE1" | 127 | 111 | 136 | 158 | 87.4 | 159 | 573 |

DP SERIES

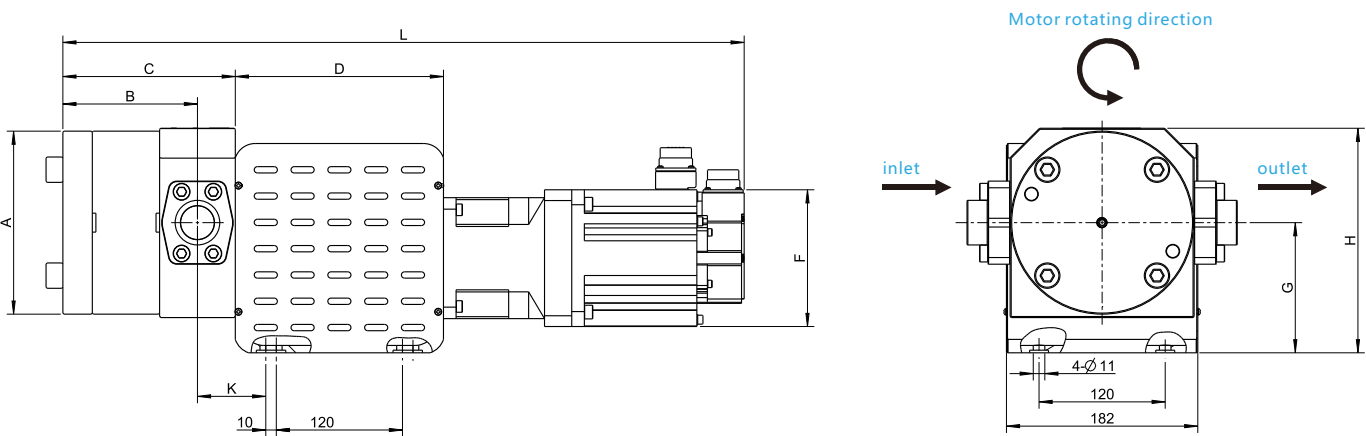
Motor configuration

DP 70-100cc + Servo motor (as default)

Servo Motor
220V/110V
60 Frame



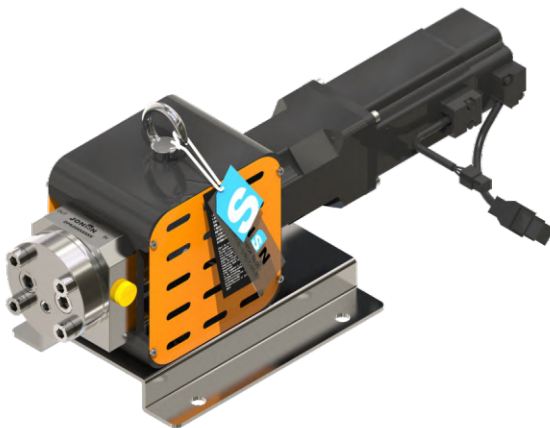
Standard: Delta
Optional: Siemens, Panasonic, Mitsubishi, Yaskawa
Others motor can be offered by client, Jonsn will help to install.



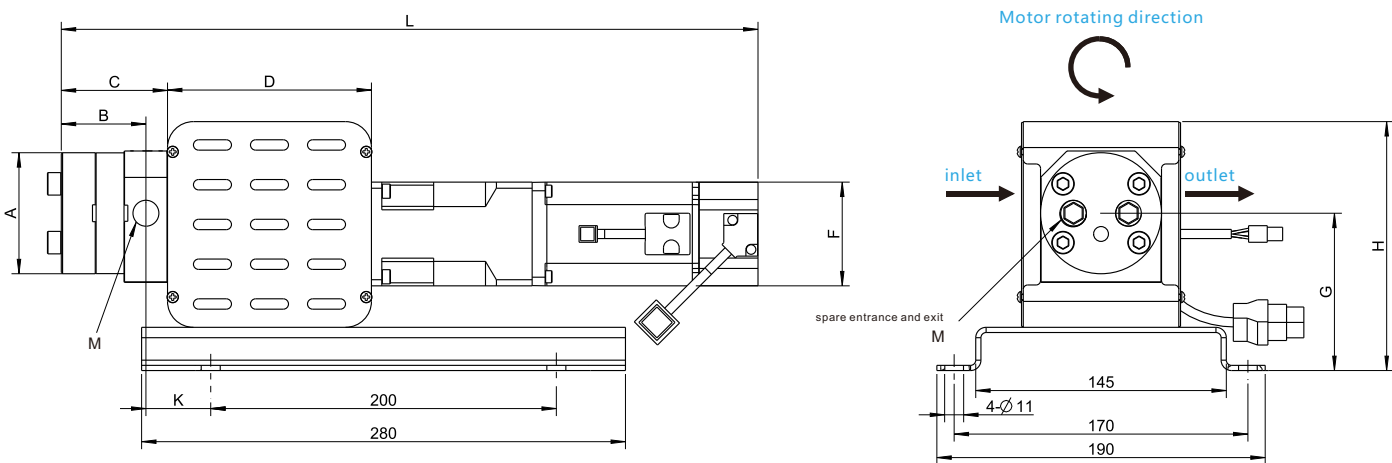
| Pumps order NO. | M | A | B | C | D | F | G | H | K | L |
|-----------------|-----------|-----|-----|-----|-----|-----|--------|-------|----|-----|
| 70cc & psf130 | SAE1 1/4" | 174 | 128 | 164 | 198 | 130 | 123.75 | 213.5 | 65 | 648 |
| 100cc & psf130 | SAE1 1/4" | 174 | 147 | 183 | 198 | 130 | 123.75 | 213.5 | 65 | 667 |

DP 0.2-3.6 cc + Servo motor + baseplate(option)

Servo Motor
220V/110V
60 Frame



Standard: Delta
Optional: Siemens, Panasonic, Mitsubishi, Yaskawa
Others motor can be offered by client, Jonsn will help to install.



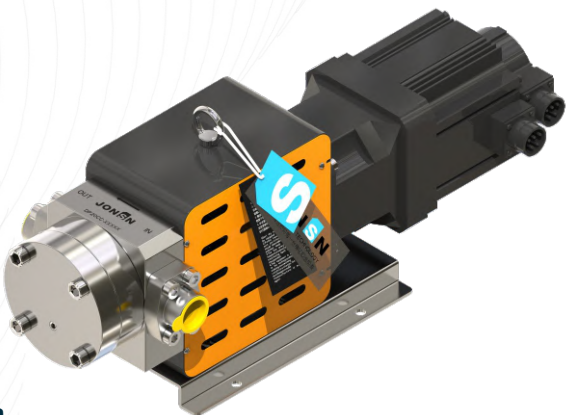
| Pumps order NO. | M | A | B | C | D | F | G | H | K | L |
|-----------------|---------|----|------|------|-----|----|------|-----|------|-------|
| 0.2cc & psf60 | 2-Rc1/4 | 70 | 36.5 | 47.8 | 118 | 60 | 90.2 | 144 | 37.3 | 389.5 |
| 0.6cc & psf60 | 2-Rc3/8 | 70 | 36.8 | 48.3 | 118 | 60 | 91 | 144 | 37.5 | 391.0 |
| 1.2cc & psf60 | 2-Rc3/8 | 70 | 40.9 | 53.4 | 118 | 60 | 91 | 144 | 37.5 | 395.1 |
| 2.4cc & psf60 | 2-Rc3/8 | 70 | 49.0 | 61.5 | 118 | 60 | 91 | 144 | 37.5 | 403.2 |
| 3.0cc & psf60 | 2-Rc3/8 | 70 | 53.0 | 65.5 | 118 | 60 | 91 | 144 | 37.5 | 407.2 |
| 3.6cc & psf60 | 2-Rc3/8 | 70 | 57.1 | 69.6 | 118 | 60 | 91 | 144 | 37.5 | 411.3 |

DP SERIES

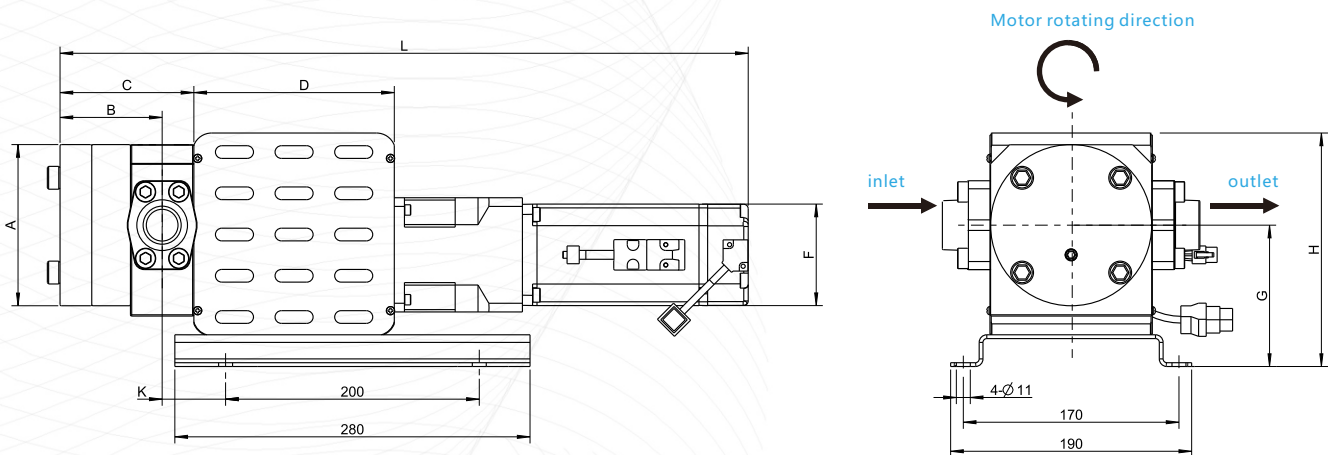
Motor configuration

DP 5-40cc + Servo motor + baseplate(option)

Servo Motor
220V/110V
60/90 Frame



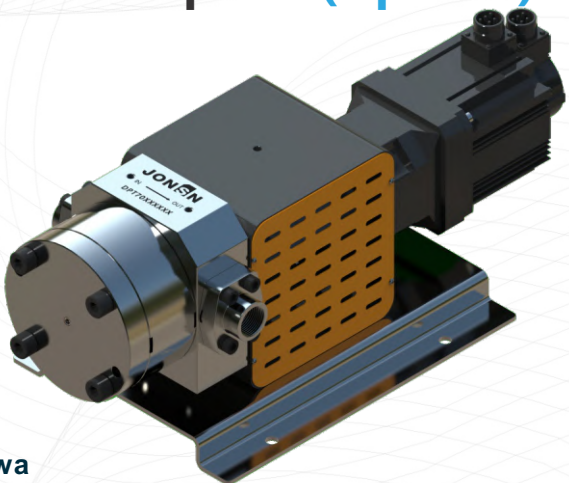
Standard: Delta
Optional: Siemens, Panasonic, Mitsubishi, Yaskawa
Others motor can be offered by client, Jonsn will help to install.



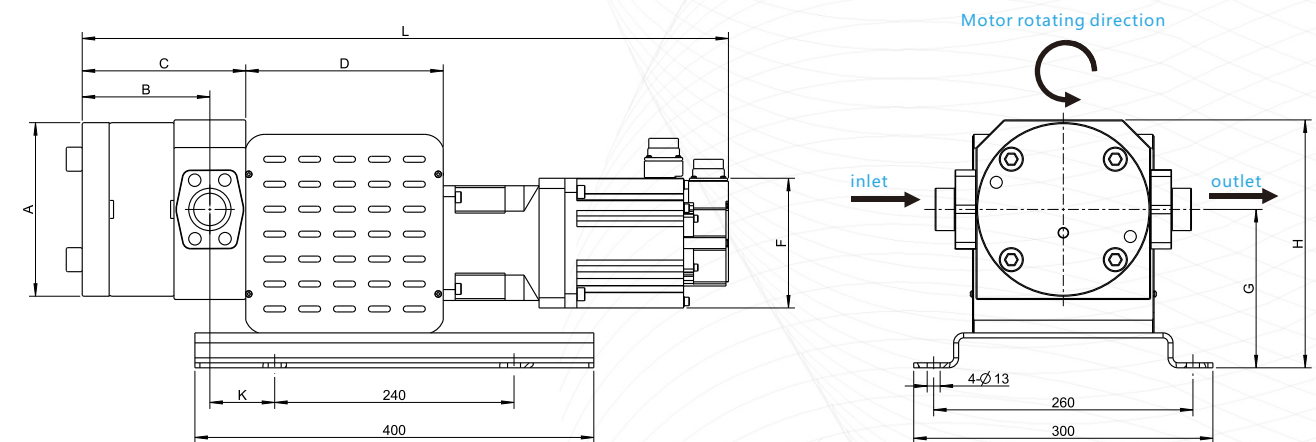
| Pumps order NO. | A | B | C | D | E | F | G | H | K | L |
|-----------------|-----|------|-------|-----|-----|----|-------|-----|----|-------|
| 5cc & psf60 | 127 | 57.6 | 82.6 | 158 | 93 | 60 | 112.4 | 184 | 50 | 464.3 |
| 10cc & psf60 | 127 | 65.3 | 90.3 | 158 | 93 | 60 | 112.4 | 184 | 50 | 472 |
| 20cc & psf60 | 127 | 80.5 | 105.5 | 158 | 93 | 60 | 112.4 | 184 | 50 | 487 |
| 20cc & psf90 | 127 | 80.5 | 105.5 | 158 | 101 | 80 | 111.4 | 184 | 50 | 543 |
| 30cc & psf90 | 127 | 95.8 | 120.8 | 158 | 101 | 80 | 111.4 | 184 | 50 | 558 |
| 40cc & psf90 | 127 | 111 | 136 | 158 | 101 | 80 | 111.4 | 184 | 50 | 573 |

DP 70-100cc + Servo motor + baseplate(option)

Servo Motor
220V/110V
60/90 Frame



Standard: Delta
Optional: Siemens, Panasonic, Mitsubishi, Yaskawa
Others motor can be offered by client, Jonsn will help to install.



| Pumps order NO. | M | A | B | C | D | F | G | H | K | L |
|-----------------|-----------|-----|-----|-----|-----|-----|-------|-------|----|-----|
| 70cc & psf130 | SAE1 1/4" | 174 | 128 | 164 | 198 | 130 | 158.7 | 248.5 | 65 | 648 |
| 100cc & psf130 | SAE1 1/4" | 174 | 147 | 183 | 198 | 130 | 158.7 | 248.5 | 65 | 667 |

GEAR METERING PUMP SPEED CONTROL SYSTEM

We are committed to providing you with professional micro flow rate solutions with rich knowledge of fluid control.



Flow closed-loop control system module (design and development)

- The system integrates main components such as filters, gear metering pumps, servo motors, high-precision flow meters, pressure sensors, valves, etc.
- Through the closed-loop control of the flow meter signal and the gear pump servo motor, the set flow rate and the actual flow rate are automatically matched and adjusted, and online instantaneous flow and pressure fluctuations can be viewed in real time.
- Users only need to connect the inlet and outlet pipelines, set the corresponding parameters of the flow meter, and start the system. The operation is simple.
- Support RS485 MODBUS communication protocol.

SELECTION PARAMETERS

Customer code

Address

company

Extension

Name

Fax

Department

E-Mail

Medium

Name

Viscosity

cps

Application areas

Medium temperature

°C

Concentration

%

Ambient temperature

°C

Whether explosive

☐ Yes

☐ No

Solid content

☐ Yes

☐ No

☐ Soft

☐ Hard

Density

Media status

☐ Fluidity

☐ Thixotropy

☐ Sticky

☐ Curing

Operating conditions

flow

L/min

or

L/h

Outlet pressure

bar

Inlet pressure

kpa

M

Working frequency

☐ Continuous Intermittent

☐ Intermittent

Vacuum

Kpa

Drive motor

☐ Three phase

☐ 220 Servo motor

Application conditions

☐ No pulsation in the mouth

☐ Metering

☐ Coating

☐ Other

☐ Pressurization

☐ Circulation

☐ Lubricating

☐

Your requirements

Please describe your application here or write down your remarks: