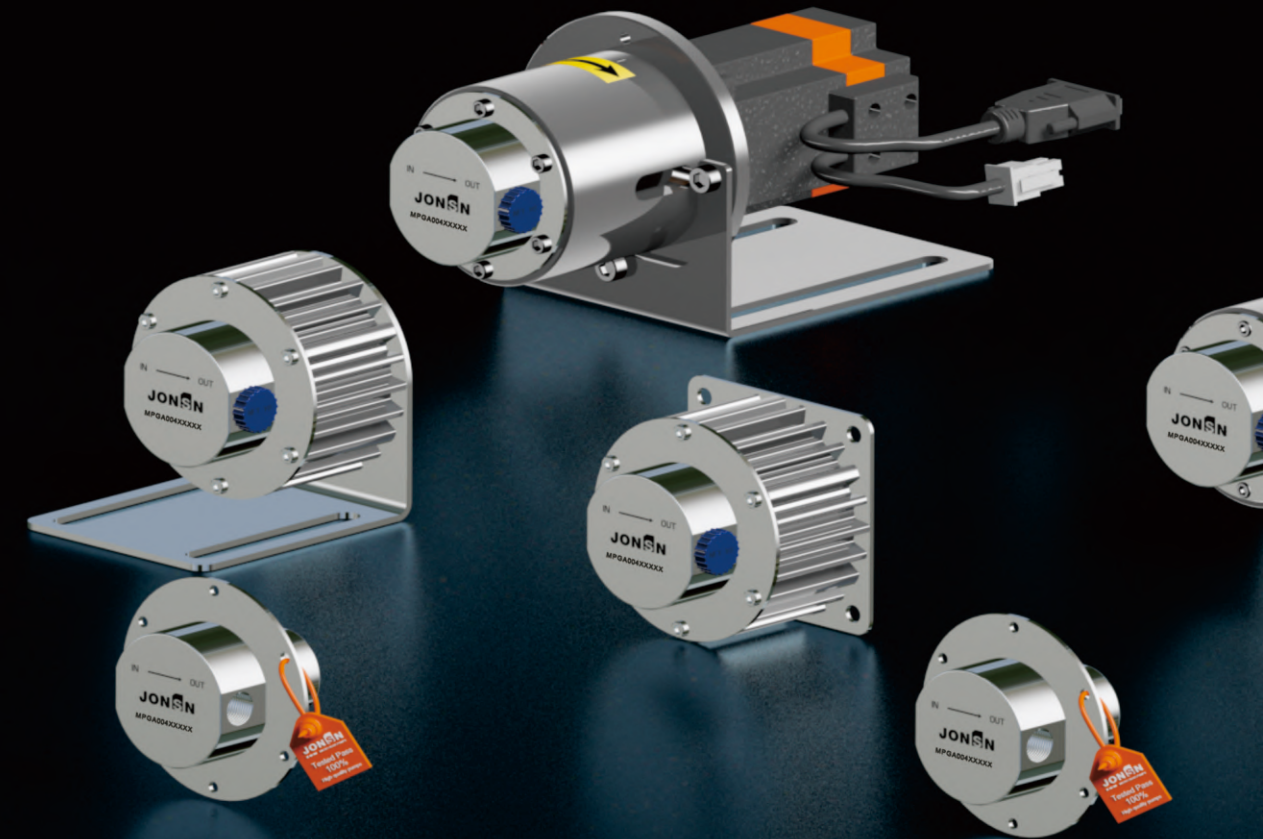


JONSN

JONSN



MPG

## PRECISION MICRO GEAR PUMP

Attentively focusing on each high precision micro gear pumps is our initial aspiration

■ SHANGHAI JONSN FLUID EQUIPMENT CO.,LTD

Address: Room 403, Building 3, No.59 Jinma Rd,  
Economic & Development District, Songjiang  
Area, Shanghai, China  
Tel: 021-34720020 Fax: 021-67689517  
Website: [www.jonsn.cn](http://www.jonsn.cn) Email: [lijun@jonsn.cn](mailto:lijun@jonsn.cn)

■ JONSN (GANZHOU) FLUID TECHNOLOGY CO., LTD

Address: Workshop 2, No. 6 Jingsan Rd,  
Economic & Development District,  
Ganzhou City, Jiangxi Province, China  
Website: [www.jonsn.com](http://www.jonsn.com)  
Email: [sales@jonsn.com](mailto:sales@jonsn.com) (International department)



## ENTERPRISE PROFILE

”

Shanghai JONSN Fluid Equipment Co.,Ltd. was established in 2010. It is a company with world-renowned imported pumps as its technical background. It has two business divisions,namely the JONSN brand pump manufacturing division and the imported pump trading division. An excellent R&D and innovation team provides customers with fluid transportation solutions that integrate design, production and sales.

In 2019, Shanghai JONSN Fluid Equipment Co., Ltd. made a new plan to establish a new factory in the central region. In 2020, the new factory was officially settled in Ganzhou National Economic and Technological Development Zone. JONSN bucked the trend and formed a new technology development team, cooperated with foreign companies, adopted foreign advanced manufacturing technology and lean management, selected high-quality raw materials, designed and manufactured precision gear metering pumps with high cost performance, easy installation and maintenance.

“



## DEVELOPMENT PATH



### 2010

Shanghai Jonsn was established. The company's core management has dozens years of experience of European and the American imported gear pumps, magnetic pumps, barrel pumps, diaphragm pump, and special pump for high temperature, high pressure and corrosive industry etc.

### 2011

Jonsn has established its own R&D center of precision gear pumps. Started ERP management system. Designed the whole series of Jonsn barrel pumps, passed test and obtained the CE certification.

### 2012

Shanghai Jonsn Fluid Equipment Co., Ltd. changed from a trade-oriented company to a production-oriented enterprise. In the same year, Jonsn barrel pump series products were put into production one by one and sold to foreign markets. Jonsn precision micro gear pump design was completed at the same year.

### 2013

Jonsn precision micro gear pump prototype has passed the verification. Its design life and process parameters far exceed similar products in Europe and America. The company fully focused on the R&D, design and production of high-precision gear pumps.

### 2014

Jonsn micro gear pumps achieved mass production. And we started the design of DX high viscosity gear pumps.

### 2015

The JONSN trademark has been registered successfully, and 2 invention patents and 7 utility model patents have been applied for. JONSN precision micro gear pump finalized mass production. Successfully applied and exported to European and American markets. Successfully signed Sinopec, CNOOC, Tianjin Jereh and many other enterprises.

### 2016

DX series high-viscosity gear pump finalized production. In the same year, the company's gear pump performance achieved an annual output value of more than 30 million.

### 2017

Import product code tracking and traceability system. Started 6S on-site management system.

### 2018

The strategic positioning of the enterprise has been upgraded to "reliable high-quality pump supplier". Focus on quality control, achieve 100% factory test pass, and make trustworthy good products.

### 2019

JONSN precision gear pump successfully obtained CE certification and applied to SCR exhaust gas treatment system in shipbuilding industry. Nippon Kaiji Kyokai staff passed the site inspection test, Jonsn obtained the "ClassNK" license from Nippon Kaiji Kyokai. Become a fluid control system solution provider for the new energy lithium battery industry.

### 2020

Launch a new LOGO brand identity and brand concept. Focus on R&D and production of high-precision gear pumps. The new factory joint with the British Brontz Group officially settled in Ganzhou. The company started the research and development of DP series high viscosity gear metering pump.

### 2021 to present

Started the TUV Rhineland ISO9001 quality management system certification work. The first sample pump of DP series high-viscosity gear metering pump enters the test verification stage.



COOPERATIVE PARTNER



**MR Series**  
precision magnetic gear pump

**DP Series**  
DP series medium and high viscosity precision gear metering pump

**DX Series**  
DX series high temperature and high viscosity gear metering pump

**Acting**  
Acting as an agent for BRONTZ internal gear pumps

期待与您的合作  
Look forward to working with you  
\*\*\*\*\*

HONORARY PATENT

We focus on the technical development of precision gear pumps. We are engaged in precision production. Skilled technology and craftsmanship are the main characteristics of our work. The birth of every Jonsn precision gear pump embodies the beauty of craftsmen. Their strict requirements for products and outstanding performance have contributed to the development of the company.

Jonsn company has successively obtained 15 utility model patents, 2 invention patents, meanwhile we have obtained the German TÜV Rheinland ISO9001 quality management system certification, CE certification, ABS certification, BV certification, Nippon Kaiji Kyokai certification, etc.

TÜV Rheinland ISO9001 quality management certification

BV certification

ABS certification

2 invention patents  
15 utility model patents

RoHS Test Report

CE certification



MPG SERIES MICRO GEAR PUMPS

1 Pulsation-free precise conveying

Positive displacement pumps provide continuous and accurate fluid delivery through gears, and can be used with servo or stepper motors to achieve extremely high-precision flow delivery.

2 Strong vacuum suction highconveying pressure, stable

Can realize low-viscosity liquid medium and high-pressure transportation.

3 No leakage

Magnetic drive and static O-ring seal can ensure that the medium in the pump ISisolated from the outside world.

4 Excellent workmanship, modular design

The whole series of gear shafts adopt special modified PEEK material + heattreatment process + high-strength zirconia ceramics. It has been tested and verified tomaintain high linearity after 2 hours of idling (dry running)under extreme conditions.

5 Selection specialization

Thousands of micro gear pumps have experience in the application, accumulateda large amount of experimental data,and professional selection and evaluation, toformulate solutions for you to reduce risks.

AFTER A DOZEN YEARS OF TECHNICAL ACCUMULATION  
JONSN GEA RPUMP HAS BECOME A KEY CONTROL EQUIPMENT FOR ONLINE  
TRANSMISSION IN THE HIGH-END MANUFACTURING INDUSTRY



Performance parameter

Flow range	1-320ml/min
Inlet pressure	-0.95~20bar
Differential pressure	0~25bar Depends on material viscosity
Pressure resistance	for PTFE O-ring is 3 Mpa, for Viton O-ring is 4 Mpa
Temperature	Standard -20°C to 80°C, low temperature to -40°C, high temperature to 160°C can be customized
Viscosity range	0.4-3000cps
Maximum density	1.8
Motor can be equipped	AC motor, BLDC motor, servo motor, variable frequency ex-proof motor
Import and export thread	NPT1/8、G1/8
Non-standard customization	OEM mechanical equipment matching servo system customization



Theoretical flow

Pump		Motor speed (rpm)				
Order No	Size	100	750	1450	2850	4000
MPGA004	1/8	4	30	58	114	160
MPGA008		8	60	116	228	320

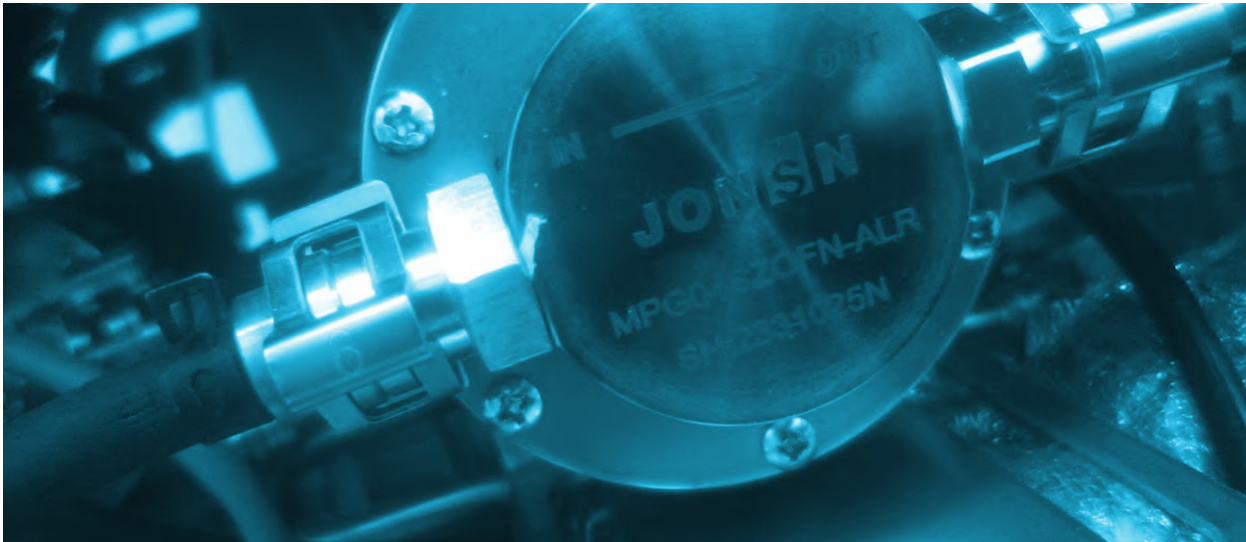
Theoretical flow(ml/min)



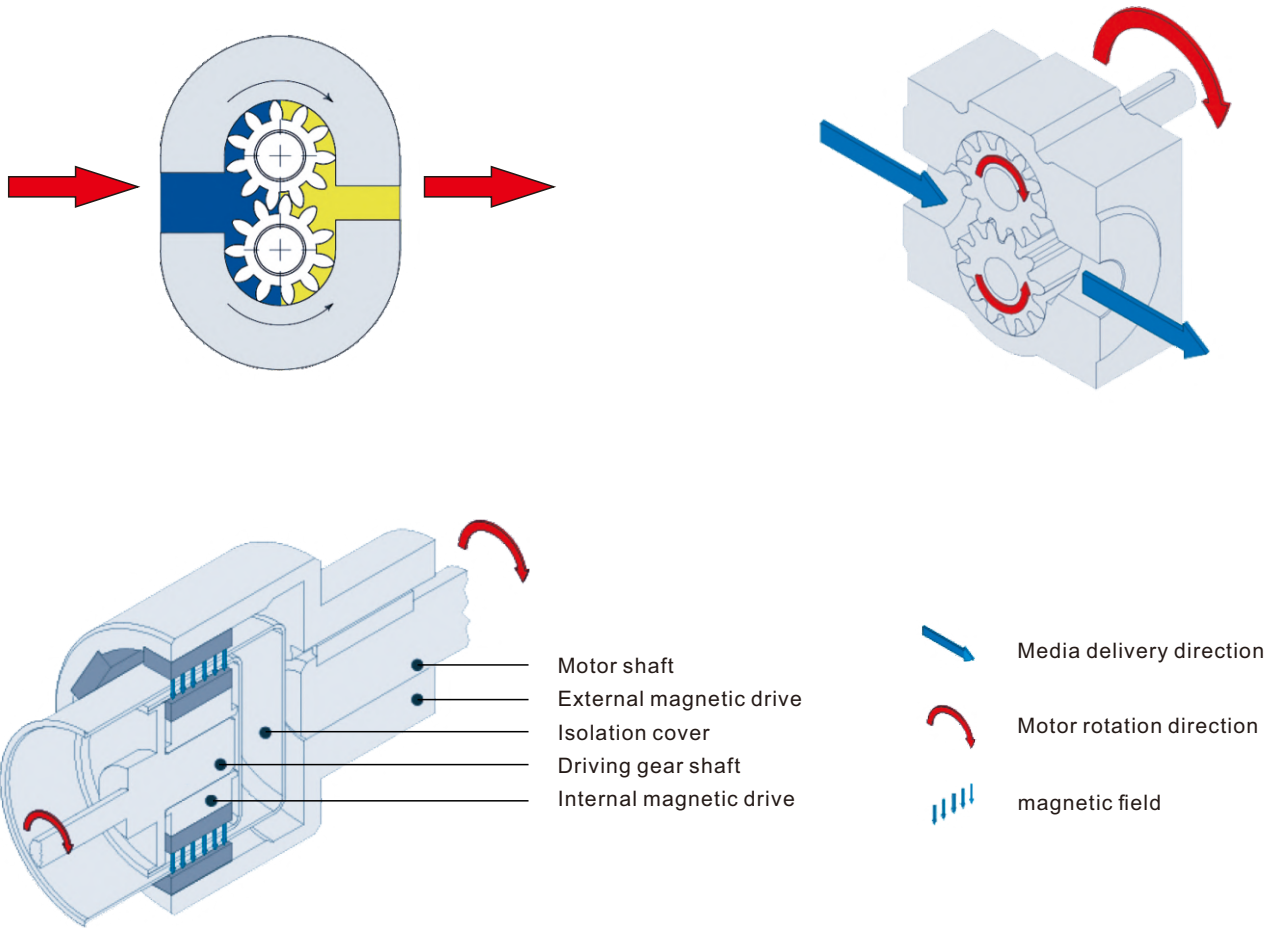
■ Note: The above flow data is tested with water as the medium and no pressure at the pump outlet. Due to the gap loss of the gear rotation, the actual flow will vary according to the medium viscosity, pressure and motor speed. The test datas tell us: When medium viscosity and pressure difference keep unchange, as long as the motor speed is stable, the flow is stable. The flow rate depends on the motor output speed and outlet pressure.

So it is vital to choose a high effective,stable motor. Users who use precision gear pumps for the first time can download our company's selection data sheet and tell us the relevant parameters.

We have professional pump and motor selection software and application experience of tens of thousands of pumps. We will provide a detailed selection report of the pump, we are able to customize a professional system solution for you. For details, please consult the sales staff.



COMPLETELY SOLVE THE MEDIUM LEAKAGE MAGNETIC GEAR PUMPS



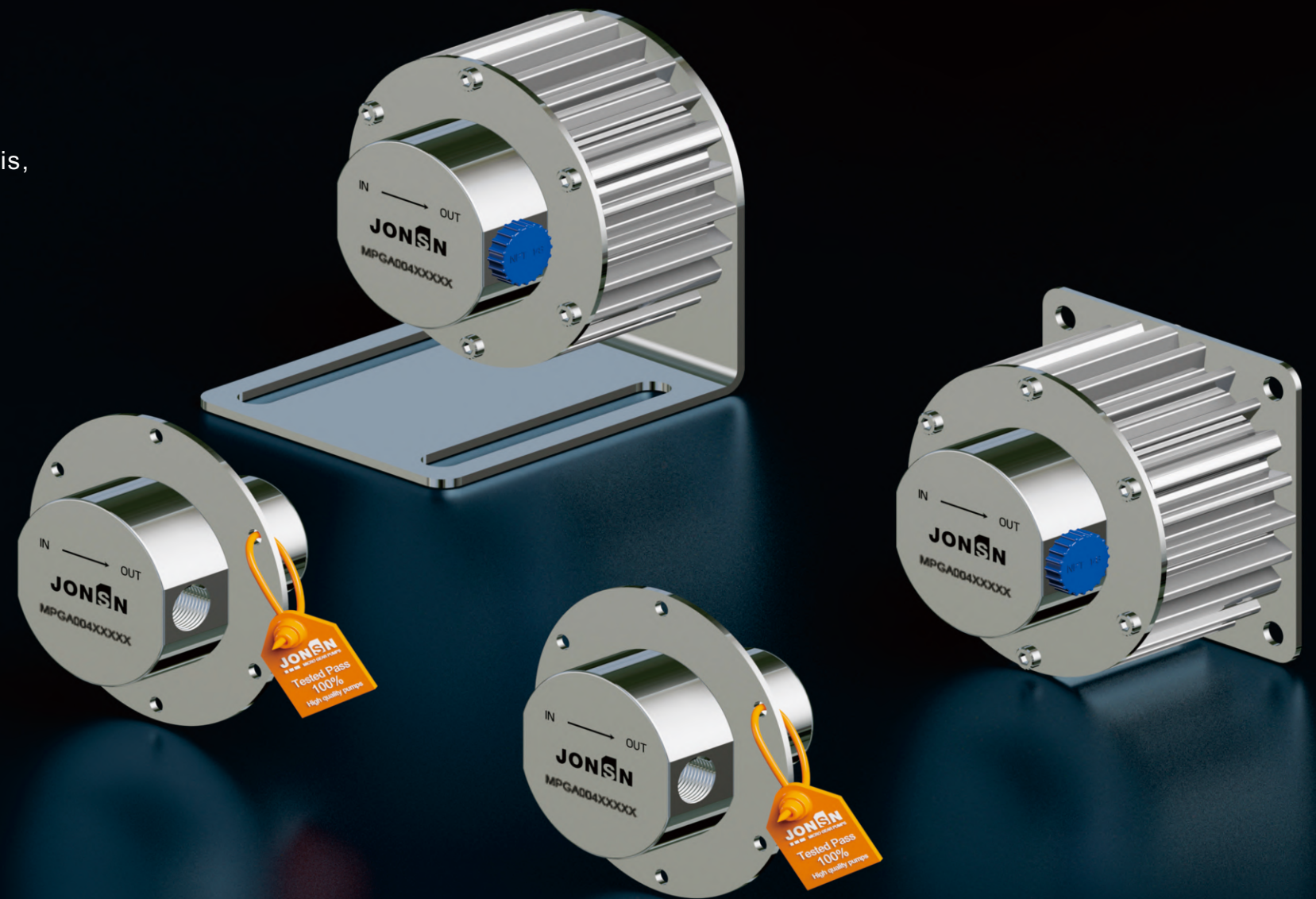
CONFIGURATION CODE

MPG	A	004	S	Z	0	L	F	N	N	A	0
Inlet & outlet thread	Pump material	Sliding bearing	Static seal	Material of Internal magnet	Special treating						
A:NPT1/8	S:316L P:PPS H:HC276 K:PEEK	0:No Sliding bearing	F:PTFE E:EPDM M:FKM P:FFKM E:CR	N:NdFeb magnet Y:Ferrite magnet	0:No special 1:DLC coating 2:Electroplating 3:Welding head 4:electroheating 5:G Thread 9:OEM						
Series No.	Displacement	Gear shaft material	Structure (Inlet and outlet direction)	Shaft seal type	Mounting plate						
	004 008 cc/r Eg.004=0.04cc/r	Z:Nano-ceramic shaft+PEEK	L:180° B:90°&other	N:Shielded magnetic drive	A:Type A B:Type B 0:Standard option						

# MPG

## MICRO FLOW TYPE GEAR PUMP

MPG series micro gear pump flow is stable and accurate with small size, it is widely used in medical, biochemical instruments, fuel cells, kidney dialysis, inkjet printing, experimental analyzer and many other industries.



# MPG





# MPG

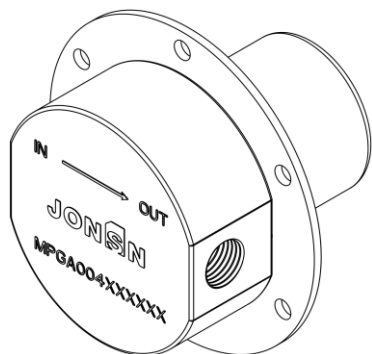
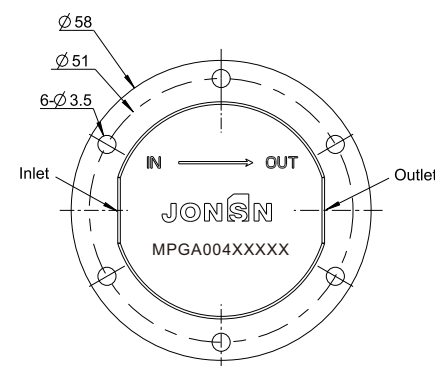
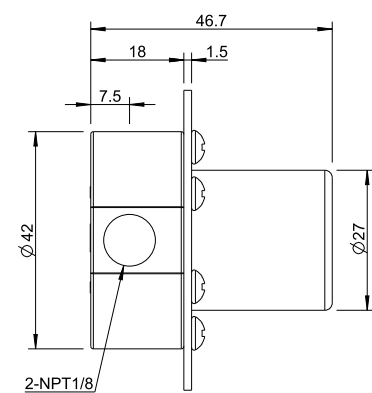
## MICRO GEAR PUMPS

Micro flow type

### Resolvable working conditions

The displacement of MPGA004 is 42 ul/rev (ul per revolution), and it can solve the flow rate of 1-135ml/min. It has the characteristics of a wide range of micro-flow adjustment, and the working pressure difference is 2 bar.

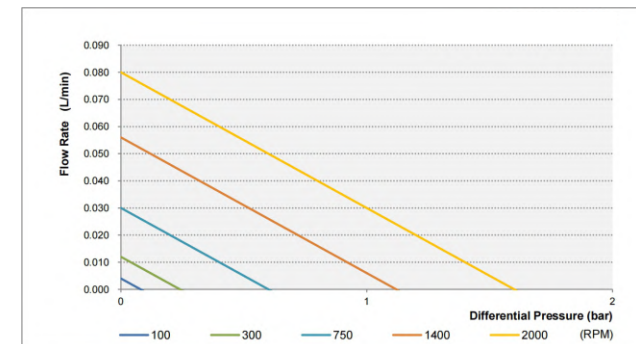
MPGA008 has a displacement of 86 ul/rev per revolution, can solve the flow rate of 22-280ml/min, has the characteristics of a wide range of micro-flow adjustment, and has a working pressure difference of 5 bar.



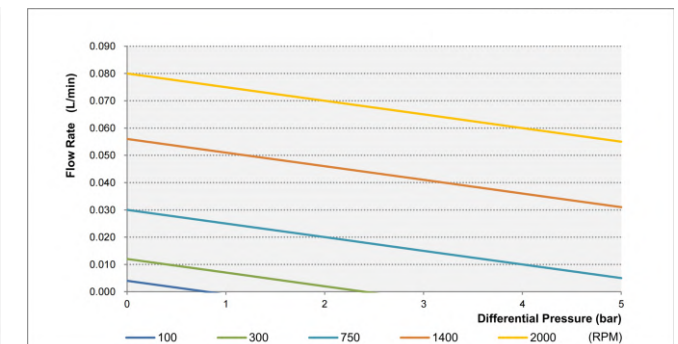
Pumps order NO.	
MPGA004	head uniform dimensions
MPGA008	

## PERFORMANCE CURVES

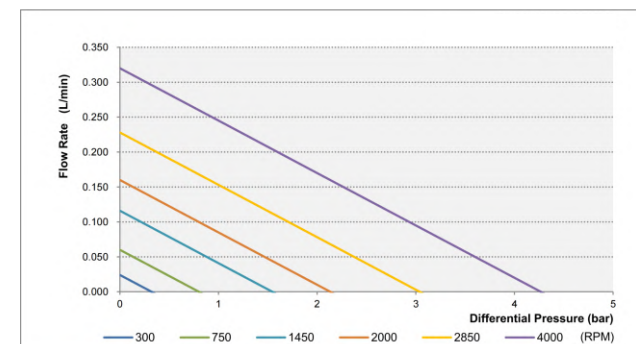
Pump Head MPGA004  
Measured with water 1 mPas



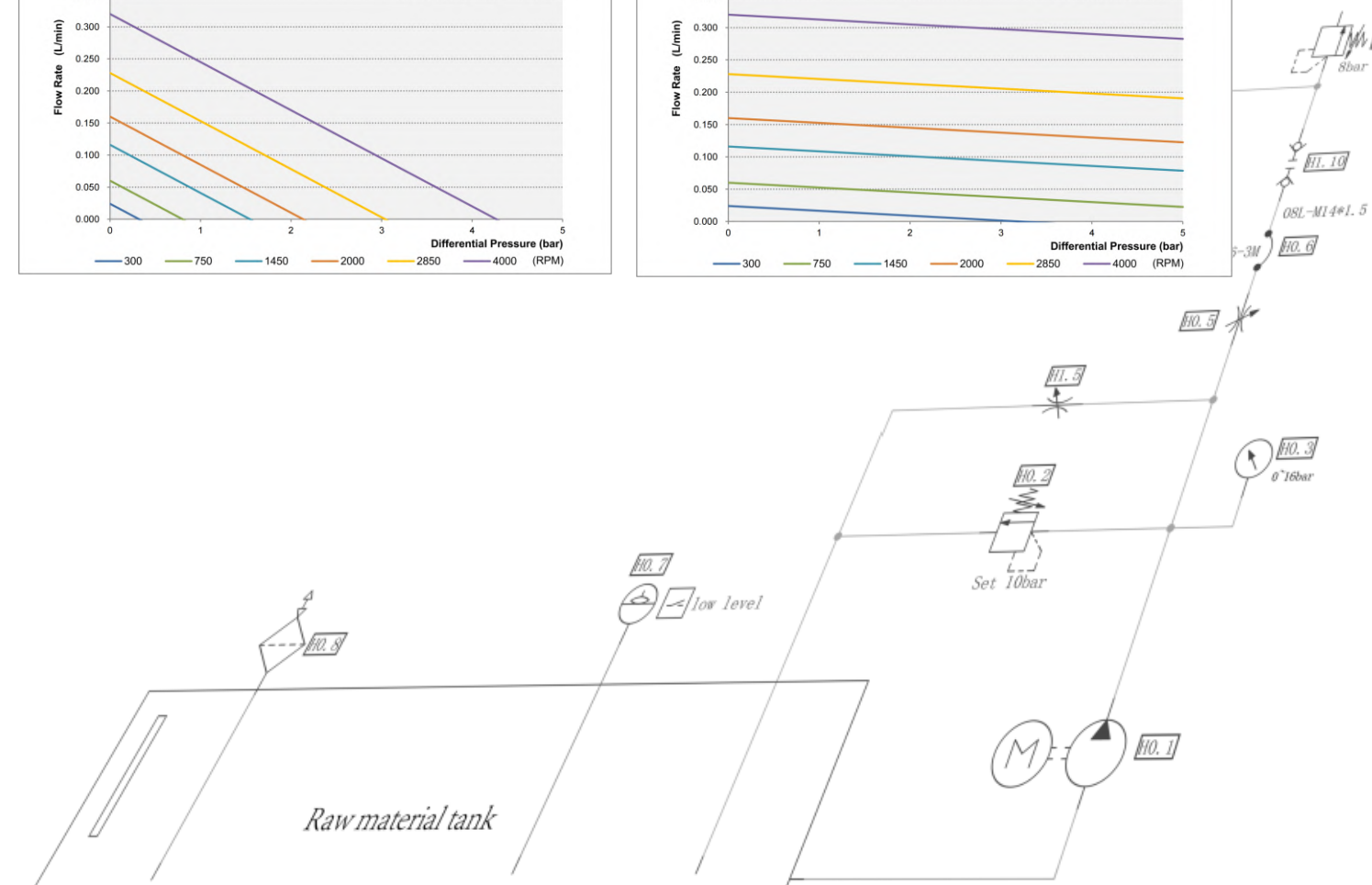
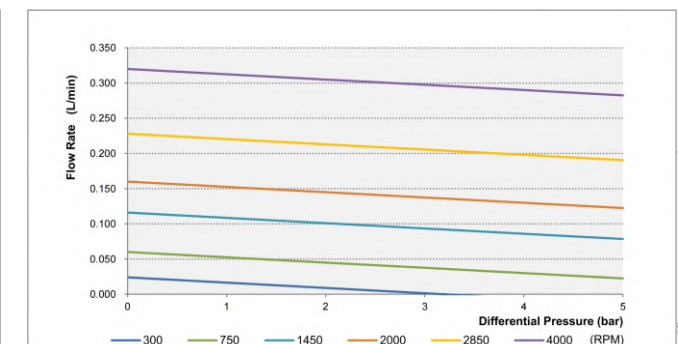
Pump Head MPGA004  
Measured with oil 100 mPas



Pump Head MPGA008  
Measured with water 1 mPas

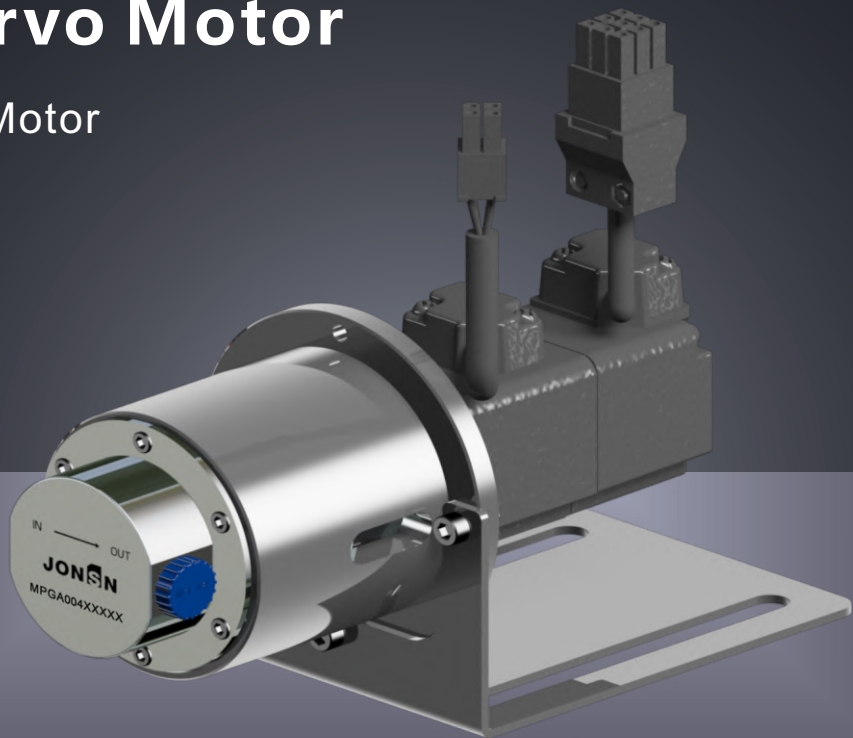


Pump Head MPGA008  
Measured with oil 100 mPas



# MPG Servo Motor

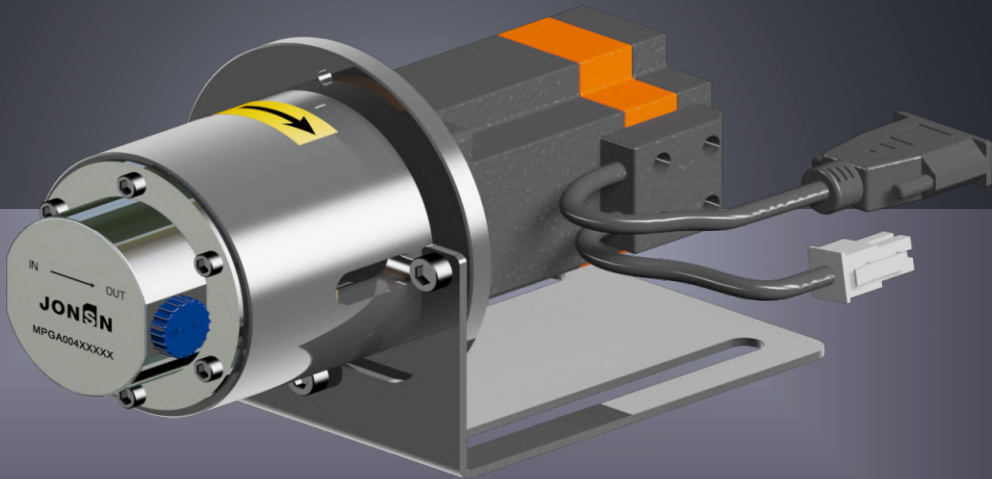
MPG Servo Motor  
220V/110V  
40 Frame



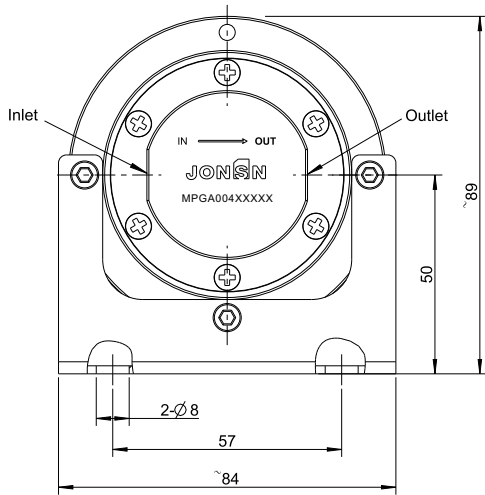
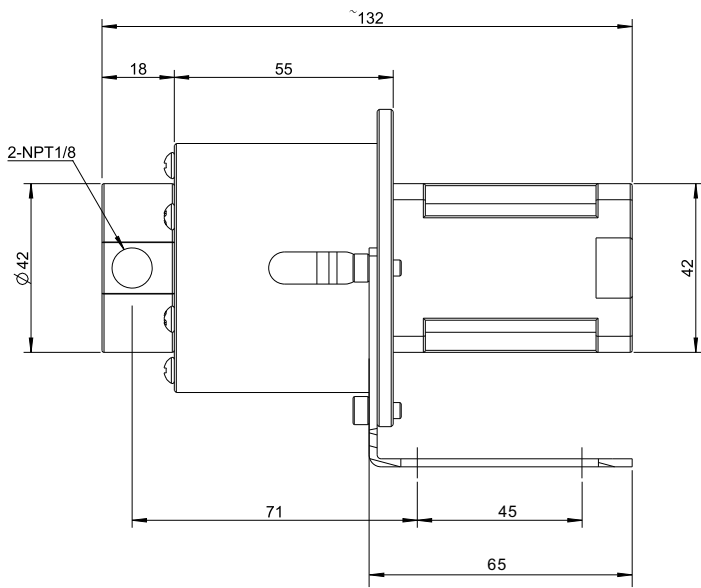
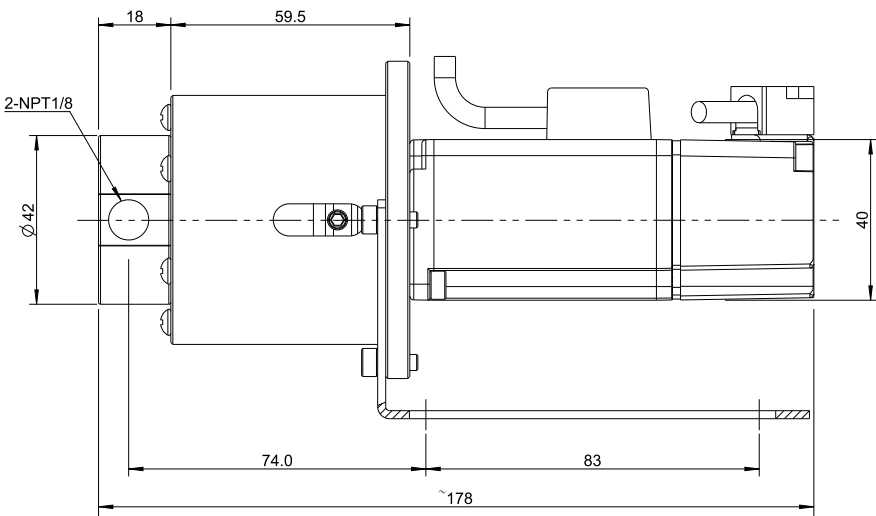
Standard motor: Delta  
Other options: Siemens, Panasonic, Mitsubishi, Yaskawa  
Other special motor purchased and installed by Jonsn

# MPG Stepper Motor

MPG Stepper Motor  
24V  
42 Frame



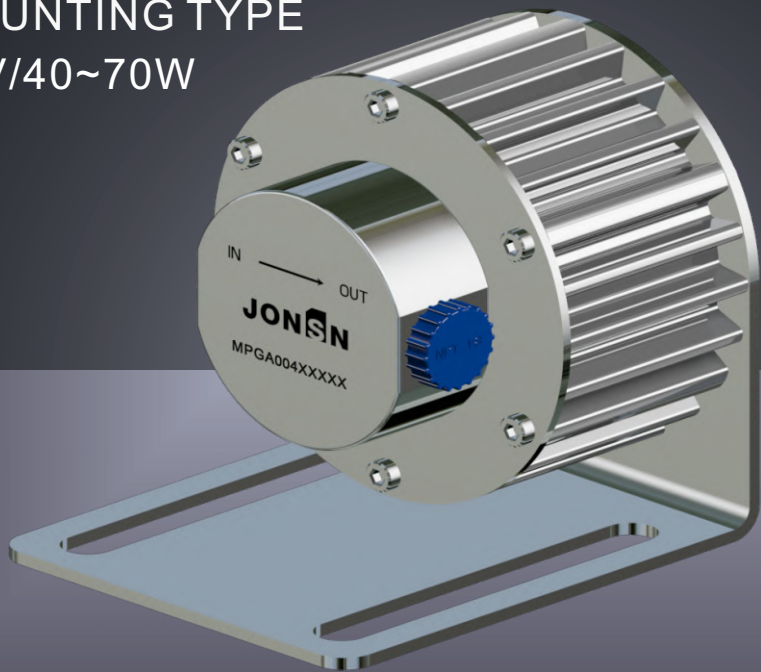
Standard: Jonsn customized  
Options: 42, 57, 60, 86 frame





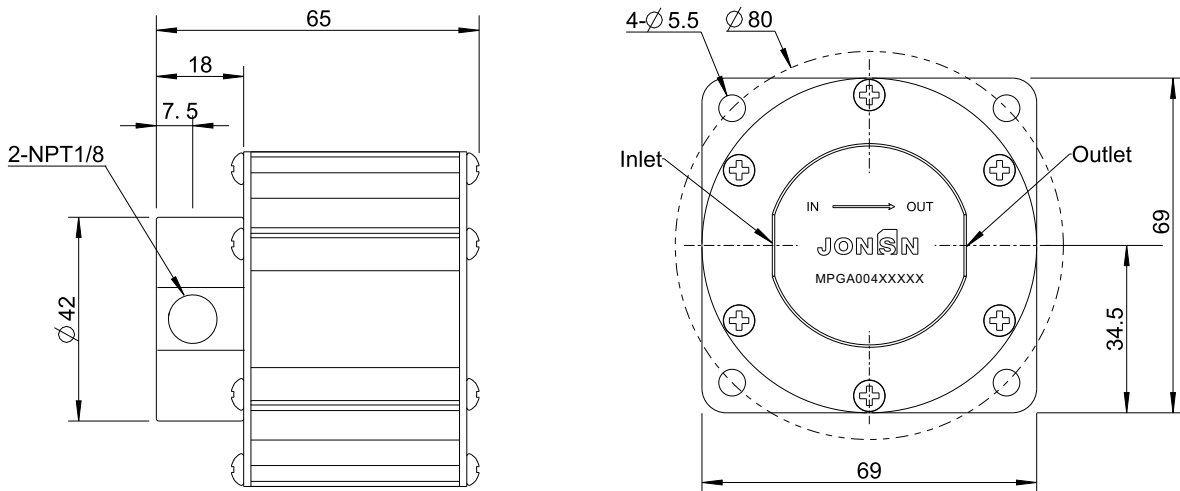
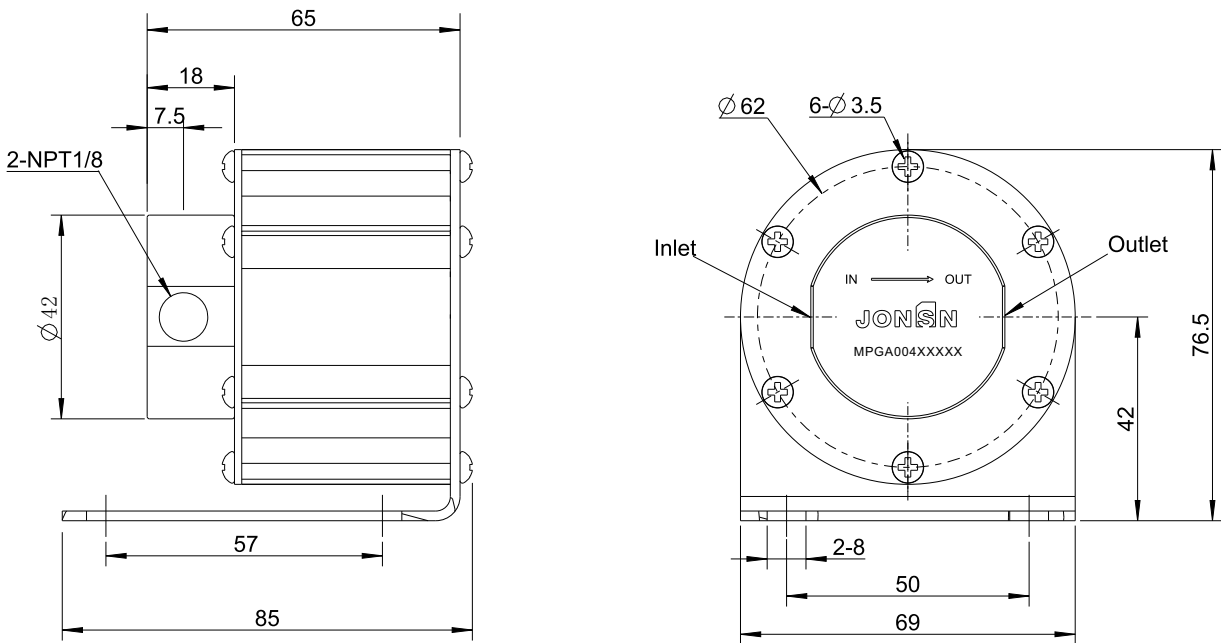
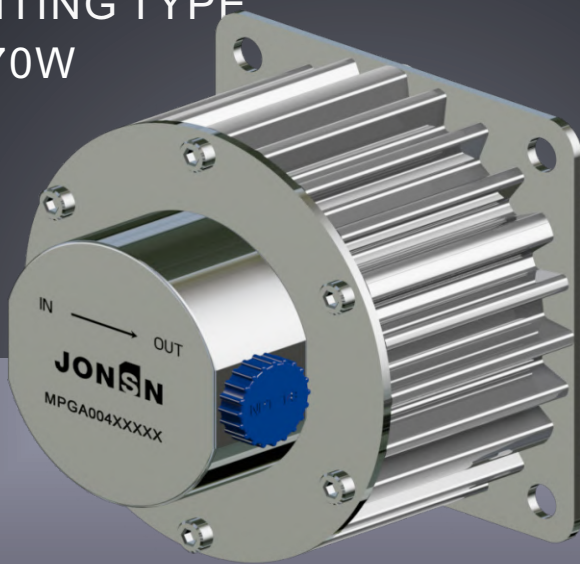
MPG

BASE MOUNTING TYPE  
BLDC 24V/40~70W



MPG

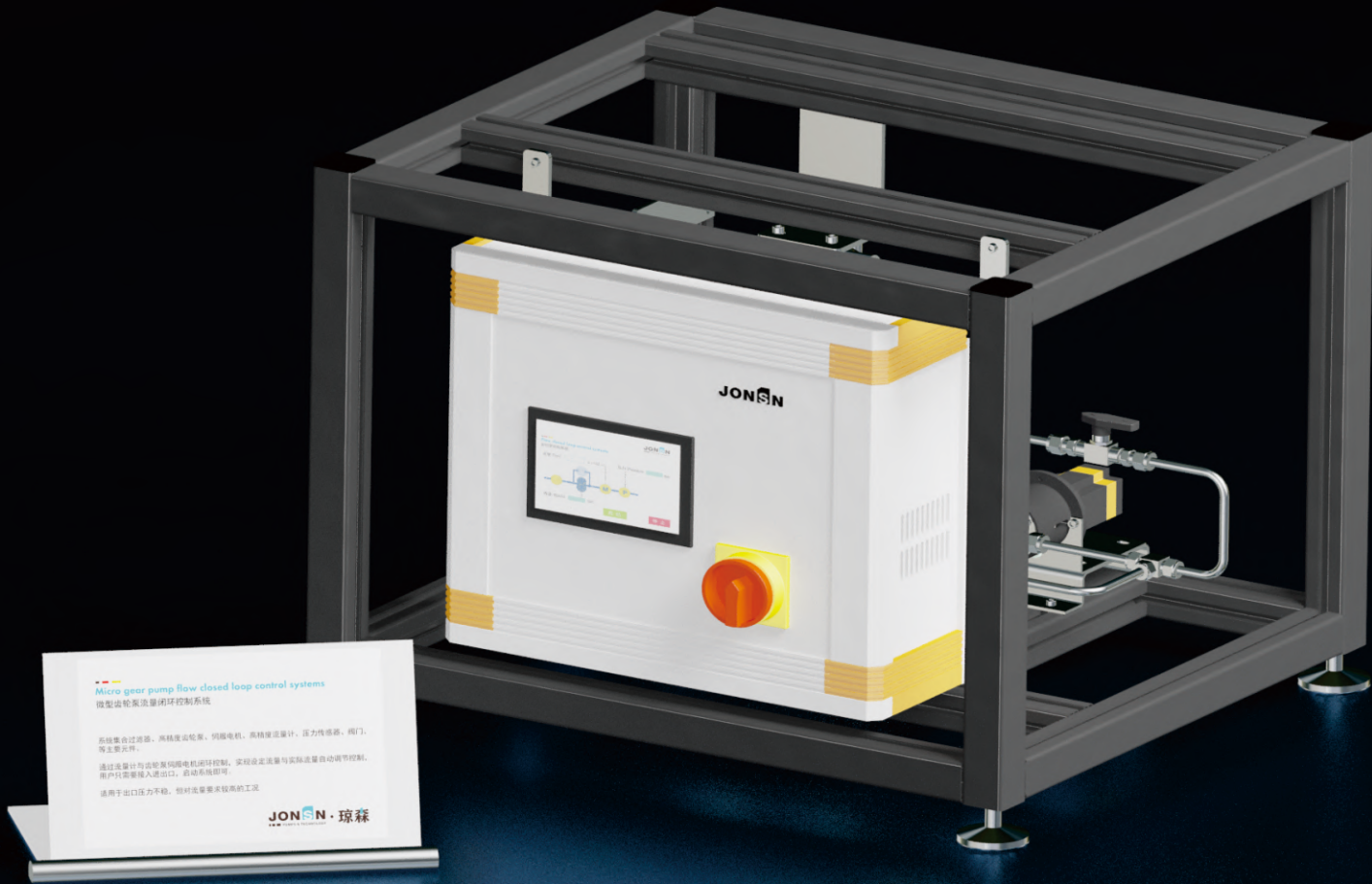
FLANGE MOUNTING TYPE  
BLDC 24V/40~70W





We are deeply involved in the field of online precision transmission of small flow

Serve domestic and abroad key laboratories, scientific institutes, enterprises and institutions, etc.  
Precision micro gear pumps are used in semiconductor, nuclear industry, special material preparation, fine chemical industry.



With rich fluid control professional knowledge, we are able to provide professional micro flow solutions.

SELECTION PARAMETERS

Customer code	<input type="text"/>	Address	<input type="text"/>
company	<input type="text"/>	Extension	<input type="text"/>
Name	<input type="text"/>	Fax	<input type="text"/>
Department	<input type="text"/>	E-Mail	<input type="text"/>

Medium

Name	<input type="text"/>	Viscosity	<input type="text"/>	cps			
Application areas	<input type="text"/>	Medium temperature	<input type="text"/>	°C			
Concentration	<input type="text"/>	%	Ambient temperature	<input type="text"/>	°C		
Whether explosive	<input type="checkbox"/> Yes	<input type="checkbox"/> No	Solid content	<input type="checkbox"/> Yes	<input type="checkbox"/> No	<input type="checkbox"/> Soft	<input type="checkbox"/> Hard
Density	<input type="text"/>	Media status	<input type="checkbox"/> Fluidity	<input type="checkbox"/> Thixotropy	<input type="checkbox"/> Sticky	<input type="checkbox"/> Curing	

Operating conditions

flow	<input type="text"/>	L/min	<input type="text"/>	L/h	Outlet pressure	<input type="text"/>	bar
Inlet pressure	<input type="text"/>	kpa	<input type="text"/>	M	Working frequency	<input type="checkbox"/> Continuous	<input type="checkbox"/> Intermittent
Vacuum	<input type="text"/>	kpa					

Drive motor

<input type="checkbox"/> Single phase	<input type="checkbox"/> 24V BLDC motor
<input type="checkbox"/> Three phase	<input type="checkbox"/> 24V Stepper motor / 220 Servo motor

Application conditions

<input type="checkbox"/> No pulsation in the mouth	<input type="checkbox"/> Metering spray	<input type="checkbox"/> Cool down	<input type="checkbox"/> Wash
<input type="checkbox"/> Pressurization	<input type="checkbox"/> Circulation	<input type="checkbox"/> Lubricating	<input type="checkbox"/> Other

Your requirements

Please describe your application here or write down your remarks:

<input type="text"/>
<input type="text"/>
<input type="text"/>